



MALHERBEX™  
PROPERTY GROUP



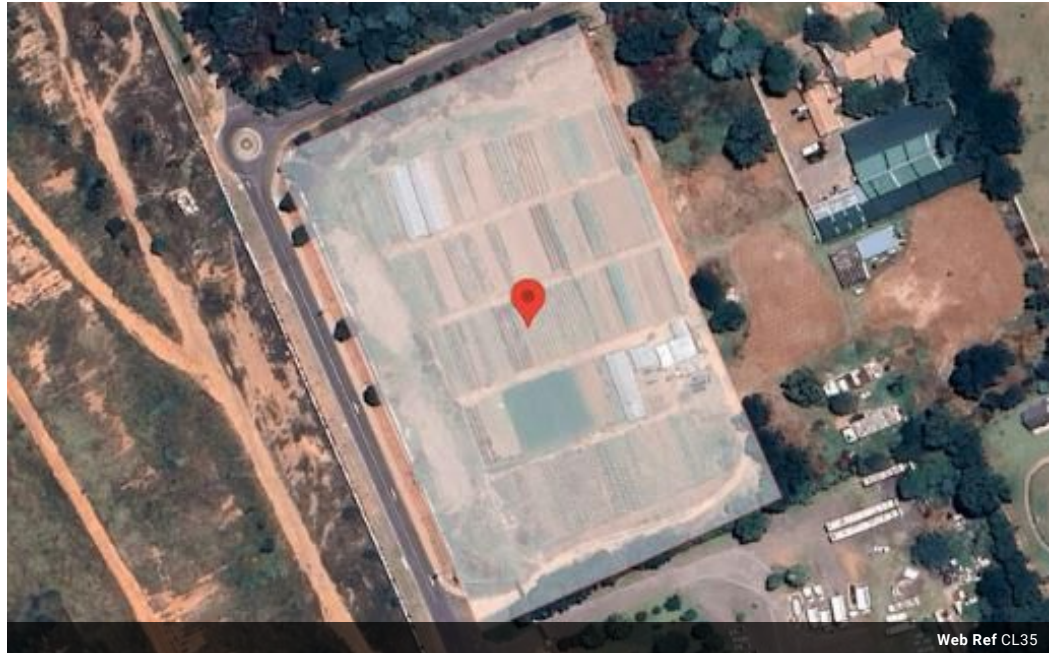
**Busi Chizwina**  
0713847066  
busi@malherbex.com

Contact Head Office

011 7869364

Unit 1 Cyrus House (Building 13) Mulberry Hill Office Park, Dainfern, Sandton, 2191

# 18,454m<sup>2</sup> Vacant Land For Sale in Linbro Park



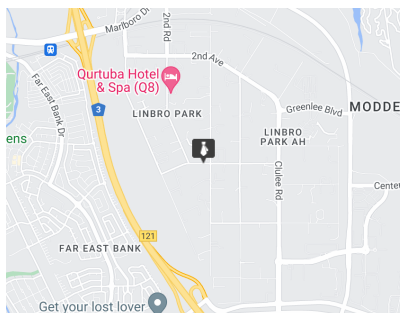
## R17,000,000

### Investors/Developers Dream

An incredible opportunity awaits potential developers and investors with this sprawling piece of land, measuring a generous 18,454 square meters. This prime land is located in a highly sought-after area, providing numerous advantages to potential buyers., rezone to industrial or take advantage of the demand for residential property in the area.

This land offers endless opportunities due to its proximity to amenities such as the Gautrain Station, airport, new developments, shops, a growing industrial zone, and major highways. Don't miss out on securing this exceptional piece of real estate in the vibrant Linbro Park.

### Features



<https://www.malherbex.com>