



MALHERBEX™  
PROPERTY GROUP



**Willie Malherbe**  
0834257174  
willie@malherbex.com

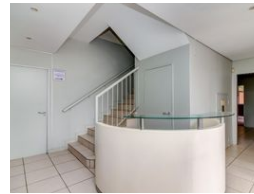
Contact Head Office

011 7869364

Unit 1 Cyrus House (Building 13) Mulberry Hill Office Park, Dainfern, Sandton, 2191

941m<sup>2</sup> Building For Sale in Dainfern

UNDER OFFER



R6,000,000

0 0

### Conveniently situated commercial building

Double-story commercial building situated in a secure office park adjacent to Dainfern Square shopping centre.

Open plan layout downstairs with a dedicated reception area, kitchen, cloakrooms, separate offices and boardroom.

The upstairs area offers ample possibilities - if the current office layout does not suit your specifications, with dry walling this area can be transformed to you requirements. Kitchen, cloakrooms, and balcony access.

Utilities and high-speed internet are in place.

Several open and 4 covered parking bays, outside storeroom.

In close proximity to Winnie Mandela Drive, Montecasino, Steyn City and Lanseria airport.

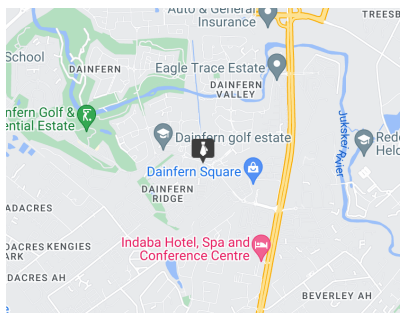
At Malherbex Property Group, we endeavor to give holistic property rental, buying, and selling advice.

### Features

**Zoning** Commercial

**Sizes**

Floor Size 941m<sup>2</sup>



<https://www.malherbex.com>