



MALHERBEX™
PROPERTY GROUP



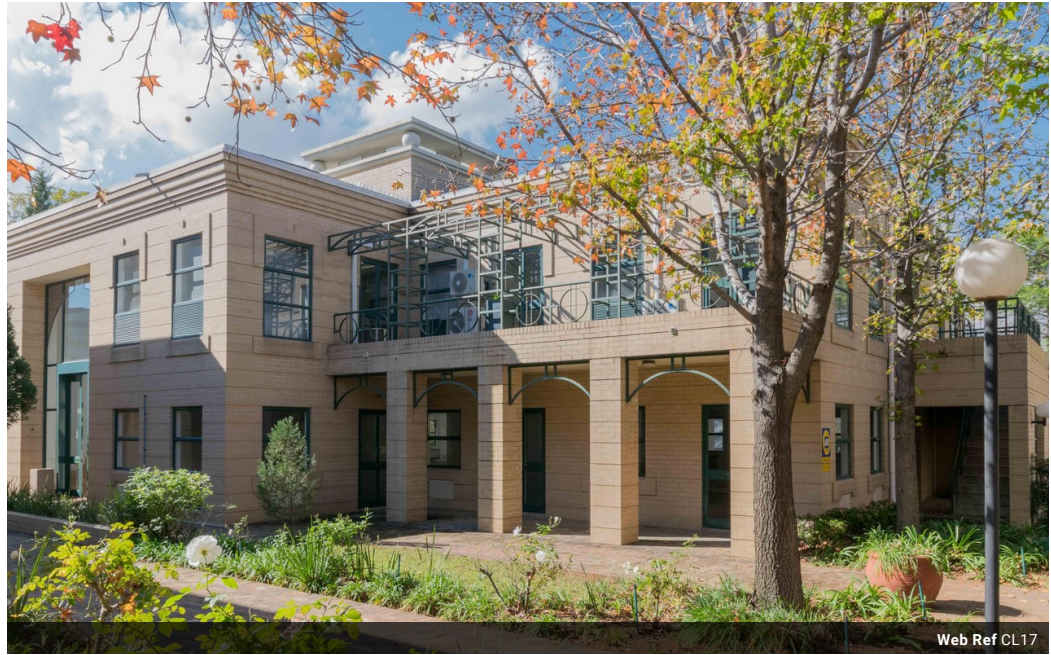
Willie Malherbe
0834257174
willie@malherbex.com

Contact Head Office

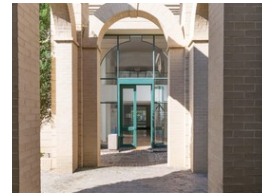
011 7869364

Unit 1 Cyrus House (Building 13) Mulberry Hill Office Park, Dainfern, Sandton, 2191

1,232m² Office For Sale in Rivonia



Web Ref CL17



R13,880,000

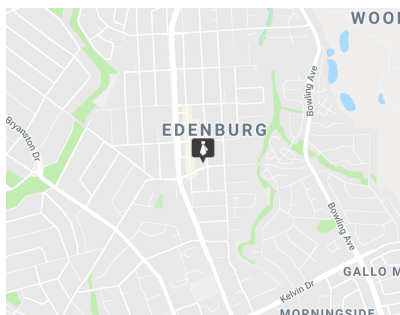
20 22

Parkland Paradise Office Park

The convenience of city centrality meets with the tranquility of parkland paradise at Five Wessels, a beautifully designed and well finished office development situated in the heart of Rivonia, which is now available for full Sectional Title Ownership. This is truly an affordable investment in an established node that is made for inspiration and innovation. The way the world works - Five Wessels echoes the London and New York trend for inner city park space situated in a tranquil and stress free urban environment. Rivonia one of the most green and established areas in the Northern suburbs, offers a character of leafy calm, yet it has immediate connectivity to the Sandton CBD and other established commercial and residential nodes. Free of

Features

Title	Sectional		
Zoning	Commercial		
Exterior		Sizes	
Covered Parking Bays	10	Floor Size	1,232m ²
Basement Parkings	10		
Open Parking Bays	22		



<https://www.malherbex.com>