



MALHERBEX™
PROPERTY GROUP



Willie Malherbe
0834257174
willie@malherbex.com

Contact Head Office

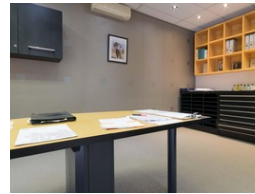
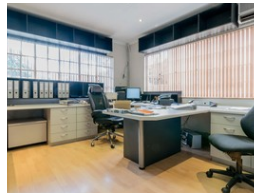
011 7869364

Unit 1 Cyrus House (Building 13) Mulberry Hill Office Park, Dainfern, Sandton, 2191

655m² Factory For Sale in Kya Sands



Web Ref CL21



R4,300,000

0 5

Immaculate midsize factory

Versatile factory for sale in immaculate condition. The factory offers four offices, a showroom, boardroom, kitchen and reception area. The factory floor offers three safe rooms and a mezzanine level for additional storage. Covered parking bays at the back with staff facilities that can be used as security accommodation. If you're in the market for a factory, look no further.

3 Phase, 80 amps, 4 parking bays out front, 5 parking bays at the back, offices 87sqm, external toilet 5sqm, basement/stores 37sqm, boardroom 50sqm, classroom/staff lounge & ablutions 35sqm, mezzanine 115sqm, factory floor 326sqm.

Property zoned as Industrial 1.

At Malherbex Property Group we endeavour to give you the most holistic commercial property buying and selling advice. Contact

Features

Title	Freehold				
Zoning	Industrial				
Interior		Exterior		Sizes	
Air Conditioning	Yes	Open Parking Bays	5	Floor Size	655m ²
Power 3 Phase	Yes			Land Size	1,000m ²



<https://www.malherbex.com>