



**MALHERBEX™**  
PROPERTY GROUP



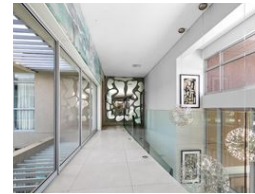
**Willie Malherbe**  
0834257174  
willie@malherbex.com

Contact Head Office

011 7869364

Unit 1 Cyrus House (Building 13) Mulberry Hill Office Park, Dainfern, Sandton, 2191

## 6 Bedroom House For Sale in Blair Atholl Golf Estate



**R67,000,000**

6 6.5 7

**Monthly Bond Repayment** R691,566.22  
Calculated over 20 years at 11% with no deposit.

**Transfer Costs** R8,382,371.00 **Bond Costs** R132,285.00  
These calculations are only a guide. Please ask your conveyancer for exact calculations.

**Monthly Levy** R15,980 **Monthly Rates** R8,000

### Exquisite Residence with Unmatched Luxury and Security

Nestled on an expansive 2996 square meter plot, this extraordinary 1600 square meter mansion is a signature property within the prestigious Blair Atholl Golf and Equestrian Estate. Designed to perfection, this home offers the ultimate fusion of modern elegance and functional luxury. A testament to sophisticated living, the residence features an open-plan layout that effortlessly transitions between expansive indoor spaces and beautifully landscaped gardens. The epitome of modern design, the home incorporates natural materials and state-of-the-art finishes, creating a sense of relaxed elegance.

Whether entertaining guests or enjoying serene family moments, this home offers a wealth of exceptional spaces, including a spacious covered patio, infinity pool, boma with braai and bar, and a luxurious cigar room. At the heart of the...

### Features

**Pets Allowed** Yes

#### Interior

Bedrooms 6  
Bathrooms 6.5  
Kitchens 1  
Recep. Rooms 2  
Studies 1  
Furnished Yes

#### Exterior

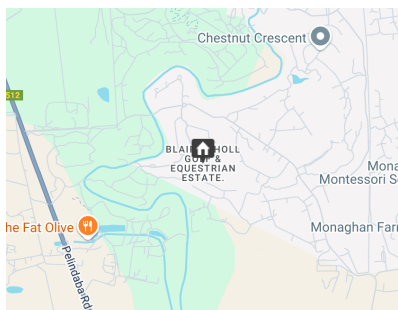
Garages 7  
Security Yes  
Dom. Accom. 1  
Pool Yes

#### Sizes

Floor Size 1,600m<sup>2</sup>  
Land Size 2,996m<sup>2</sup>

#### Extras

Generator Solar Home automation Vegetable garden Computerised irrigation garden Air conditioning Fireplace Underfloor heating Jacuzzi



<https://www.malherbex.com>