

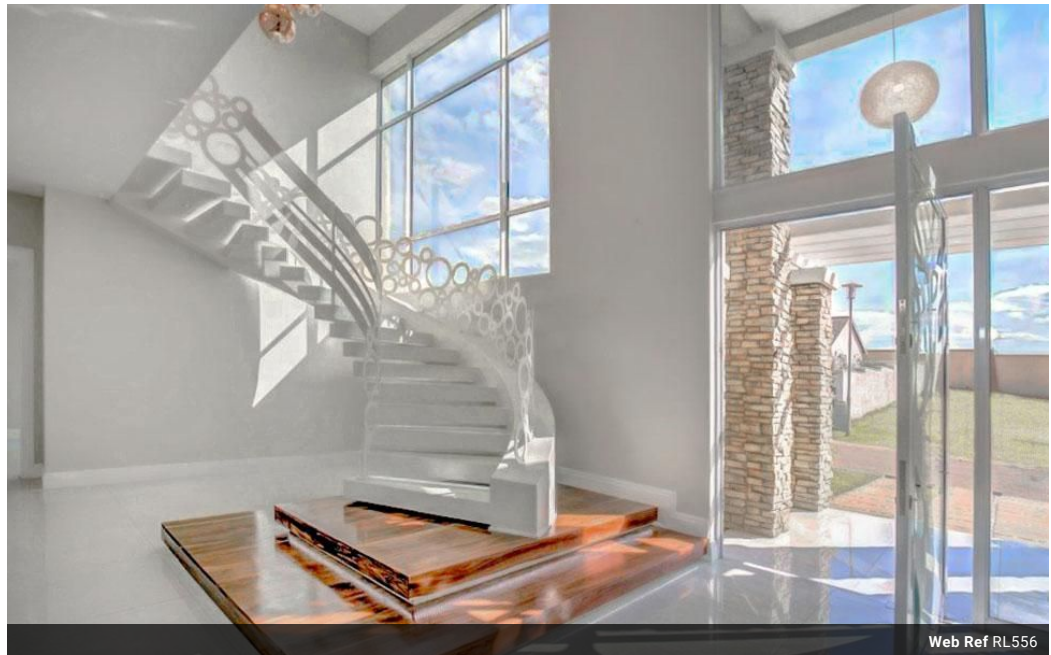


**Willie Malherbe**  
0834257174  
willie@malherbex.com

Contact Head Office

011 7869364

Unit 1 Cyrus House (Building 13) Mulberry Hill Office Park, Dainfern, Sandton, 2191



Web Ref RL556



R12,500,000

**Monthly Bond Repayment** R129,023.55  
Calculated over 20 years at 11% with no deposit.

**Transfer Costs** R1,272,752.00    **Bond Costs** R99,035.00  
These calculations are only a guide. Please ask your conveyancer for exact calculations.

**Monthly Levy** R3,280

5    5.5    4

### Contemporary with flair in Helderfontein Eco Estate

Investment sale with tenant in place until April 2022 with excellent return.

This contemporary and grand yet unpretentious home encapsulates modern living perfectly. On entering this natural light filled home you are welcomed by a sweeping impressive staircase. . We are proud to present this superb five bedroom en-suite home, offering a blend of glass, high ceilings, open-plan living, large entertainment areas, including a jacuzzi in a n outdoor courtyard area, pizza oven and a beautifully built-in bar area. The main bedroom offering a beautiful dressing room and leads to a big balcony with views. The modern bathrooms compliments each bedroom individually. Upstairs you are welcomed by a pyjama lounge with its own coffee station for evening relaxation together with the family. A spacious master chef kitchen and...

### Features

<b>Pets Allowed</b>	Yes		
<b>Interior</b>		<b>Exterior</b>	<b>Sizes</b>
Bedrooms	5	Garages	4
Bathrooms	5.5	Security	Yes
Kitchens	1	Dom. Accom.	1
Recep. Rooms	3	Pool	Yes
Studies	1		
Furnished	No		
			Floor Size 672m <sup>2</sup>
			Land Size 992m <sup>2</sup>

