



MALHERBEX™
PROPERTY GROUP



Willie Malherbe
0834257174
willie@malherbex.com

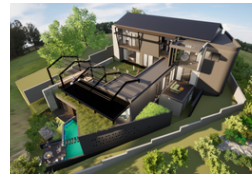
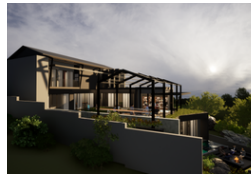
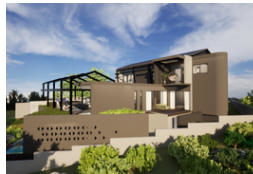
Contact Head Office

011 7869364

Unit 1 Cyrus House (Building 13) Mulberry Hill Office Park, Dainfern, Sandton, 2191



Web Ref RL1237



R14,900,000

Monthly Bond Repayment R153,796.07
Calculated over 20 years at 11% with no deposit.

Transfer Costs R1,579,477.00 **Bond Costs** R108,535.00
These calculations are only a guide. Please ask your conveyancer for exact calculations.

Monthly Levy R3,700

5 5.5 3

Luxurious Turnkey Development in Prestigious Helderfontein Estate

Opportunity to build a five bedroom home in Helderfontein estate. Discover an opportunity to own a five bedroom home in the esteemed Helderfontein Eco Estate overlooking one of the estates beautiful dams. This exquisite, three-story property on an 801sqm stand, offers unparalleled luxury living. Immerse yourself in the exceptional craftsmanship and bespoke design that only Studios Architects and Lock Developments can offer. From the grand architectural elements to the smallest intricate details, every aspect of this home is tailored to exceed your expectations. Grand entertaining spaces: The lower level is perfect for hosting, featuring an expansive patio with a built-in bar, a boma, and a swimming pool. The lower level offers a guest bedroom with an en-suite bathroom, which adds to the convenience and luxury of this level,...

Features

Pets Allowed	Yes				
Interior		Exterior		Sizes	
Bedrooms	5	Garages	3	Floor Size	648m ²
Bathrooms	5.5	Dom. Accom.	1	Land Size	801m ²
Kitchens	1	Pool	Yes		
Recep. Rooms	3	Views	Yes		
Studies	1				

