



MALHERBEX™
PROPERTY GROUP



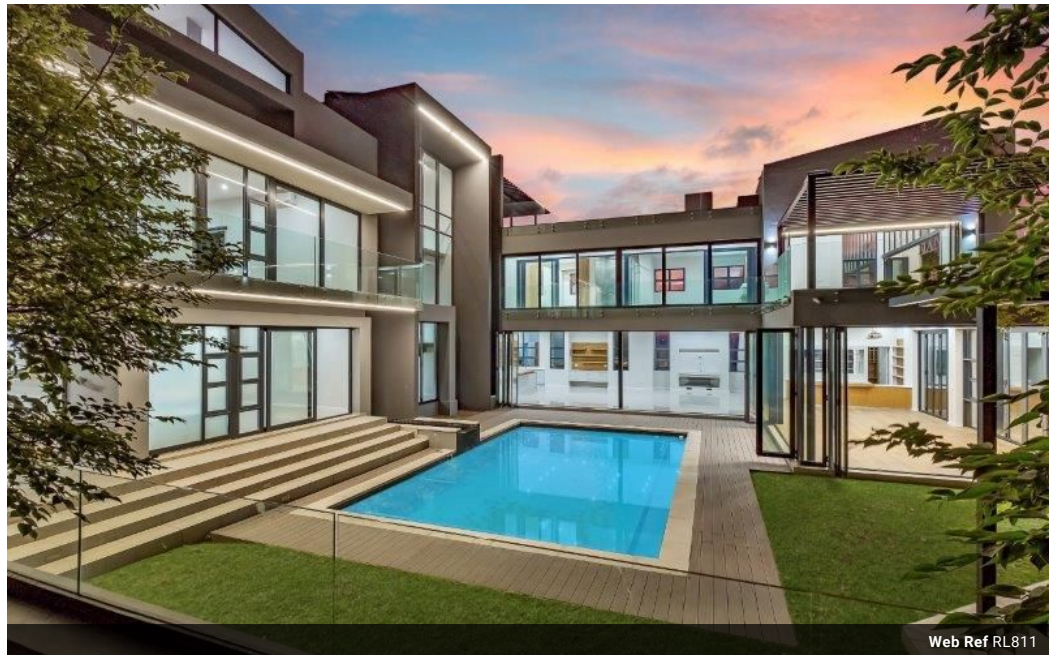
Willie Malherbe
0834257174
willie@malherbex.com

Contact Head Office

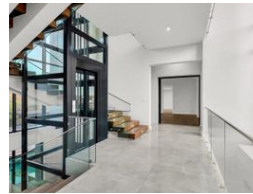
011 7869364

Unit 1 Cyrus House (Building 13) Mulberry Hill Office Park, Dainfern, Sandton, 2191

5 Bedroom House For Sale in Steyn City



Web Ref RL811



R24,995,000

Monthly Bond Repayment R257,995.49
Calculated over 20 years at 11% with no deposit.

Transfer Costs R2,921,721.00 **Bond Costs** R132,285.00

These calculations are only a guide. Please ask your conveyancer for exact calculations.

Monthly Levy R4,830

5 5.5 4

Architectural masterpiece

Contemporary and spectacular family home with panoramic views over the parklands of the prestigious Steyn City offering a lifestyle reserved for the select few.

Built for entertainment, the five-bedroom home emphasizes open-plan, spacious living combined with laid-back luxury.

The impressive portico at the front entrance boasts fountains and a water feature that visibly extends beneath the house and out to the swimming pool beyond.

The marblesque floors of the triple-volume entrance hall lead to an elevator and floating wooden staircase ascending to the levels above.

On the ground level, a grand living hall comprises an open-plan kitchen with SMEG appliances (including an integrated fridge and freezer), a massive open-plan dining and lounge area with a gas fireplace, integrated sound, and walls of glass stacker...

Features

Pets Allowed Yes

Interior

Bedrooms 5
Bathrooms 5.5
Kitchens 2
Recep. Rooms 3
Studies 1

Exterior

Garages 4
Carports / Parkings 8
Dom. Accom. 2
Pool Yes

Sizes

Land Size 1,452m²



<https://www.malherbex.com>