



MALHERBEX™
PROPERTY GROUP



Willie Malherbe
0834257174
willie@malherbex.com

Contact Head Office

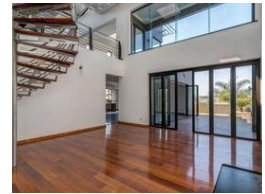
011 7869364

Unit 1 Cyrus House (Building 13) Mulberry Hill Office Park, Dainfern, Sandton, 2191

4 Bedroom House For Sale in Eagle Canyon Golf Estate



Web Ref RL720



R9,995,000

Monthly Bond Repayment R103,167.23
Calculated over 20 years at 11% with no deposit.

Transfer Costs R980,126.00 **Bond Costs** R84,785.00
These calculations are only a guide. Please ask your conveyancer for exact calculations.

Monthly Levy R3,240 **Monthly Rates** R4,600

4 4.5 5

Spectacular ultra-modern home with breathtaking views

A home with a difference for the selective property connoisseur, set on a ridge overlooking the Colorado Links golf course in the Eagle Canyon Golf Estate.
Boasting various reception areas, a separate cigar/wine lounge, built-in bar with access to the decked pool area.
Four en-suite bedrooms with balcony access, main bedroom with a separate study, and access to a balcony-jacuzzi with uninterrupted views of the golf course.
Staff accommodation and garaging for five cars.
Eagle Canyon Estate prides itself with a top-notch clubhouse offering a restaurant, bar, spa, and gym.
A wonderful lifestyle to admire offering green belts and dams.

Features

Pets Allowed	Yes			
Interior		Exterior		Sizes
Bedrooms	4	Garages	5	Land Size
Bathrooms	4.5	Dom. Accom.	1	882m ²
Kitchens	1	Pool	Yes	
Recep. Rooms	4			
Studies	1			



<https://www.malherbex.com>