



MALHERBEX™
PROPERTY GROUP



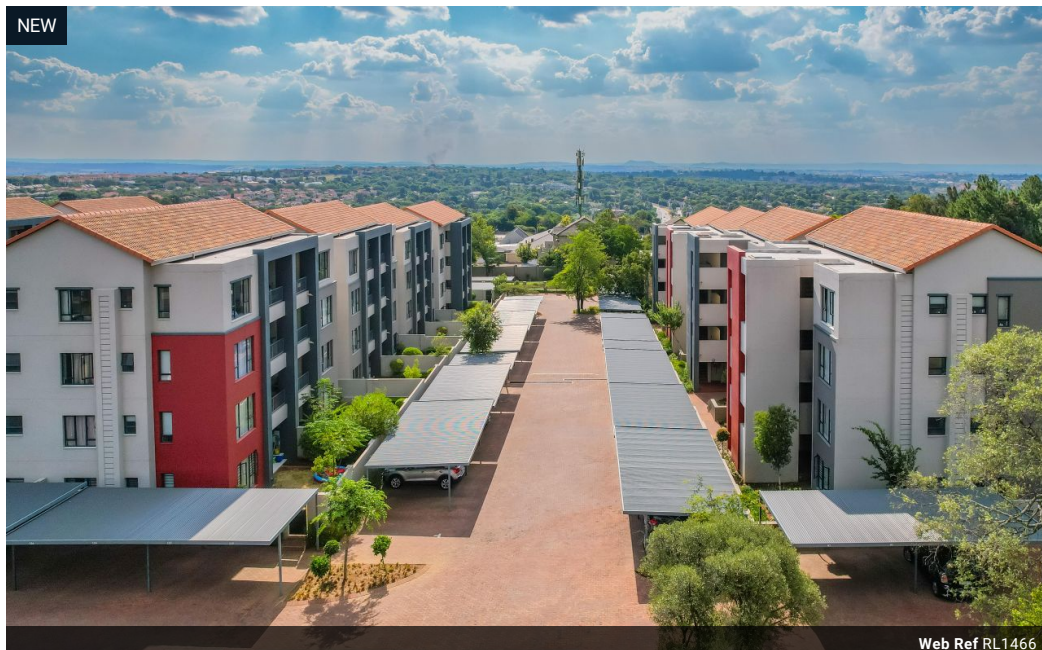
Busi Chizwina
0713847066
busi@malherbex.com

Contact Head Office

011 7869364

Unit 1 Cyrus House (Building 13) Mulberry
Hill Office Park, Dainfern, Sandton, 2191

3 Bedroom Apartment For Sale in Beverley



R1,800,000

🛏 3 🚿 2

Monthly Bond Repayment R18,579.39

Calculated over 20 years at 11% with no deposit.

Transfer Costs R61,039.00 **Bond Costs** R30,875.00

These calculations are only a guide. Please ask your conveyancer for exact calculations.

Monthly Levy R1,800 **Monthly Rates** R1,100

Modern Garden Apartment

Set within a highly sought-after complex in Lonehill, this contemporary 3-bedroom, 2-bathroom apartment offers secure, stylish living ideal for families, professionals, or savvy investors. Designed with comfort and practicality in mind, this home blends modern aesthetics with everyday functionality.

The open-plan layout includes a sophisticated kitchen fitted with premium finishes, ample cupboard space, and top-of-the-line appliances. The light-filled living and dining area opens effortlessly onto a private balcony-perfect for entertaining or simply unwinding.

Each of the three bedrooms is spacious and equipped with built-in wardrobes. The main bedroom features a private en-suite bathroom, while the second bathroom is well-appointed to serve both guests and family members. The apartment boasts of 5kw back up power system...

Features

Pets Allowed Yes

Interior

Bedrooms	3
Bathrooms	2
Kitchens	1
Recep. Rooms	2
Furnished	No

Exterior

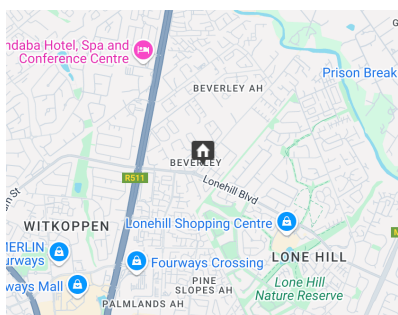
Carports / Parkings	2
Security	Yes
Pool	Yes

Sizes

Floor Size	94m²
Land Size	1,686m²

Extras

Private Garden Pets Allowed Security Shared Pool 24 Hour Access Open Plan Guard Guard House



<https://www.malherbex.com>