



MALHERBEX[™]
PROPERTY GROUP



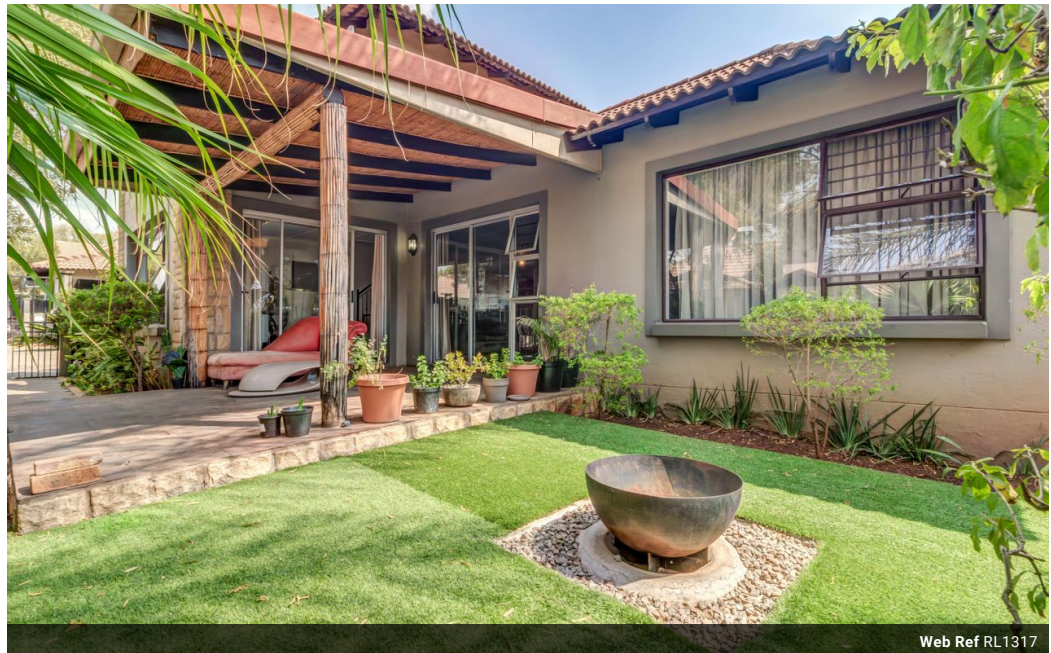
Janine Meyer
0716890860
janine@malherbex.com

Contact Head Office

011 7869364

Unit 1 Cyrus House (Building 13) Mulberry Hill Office Park, Dainfern, Sandton, 2191

4 Bedroom Duplex For Sale in Broadacres



Web Ref RL1317



R2,445,000

4 2.5 2

Monthly Bond Repayment R25,237.01
Calculated over 20 years at 11% with no deposit.

Transfer Costs R111,320.00 **Bond Costs** R38,415.00
These calculations are only a guide. Please ask your conveyancer for exact calculations.

Monthly Levy R2,050 **Monthly Rates** R2,600

4 Bedroom Duplex For Sale in Broadacres

Discover the perfect blend of modern living and tranquility in this stunning 4-bedroom home located in a prestigious estate. Designed for families seeking comfort and functionality, the open-plan layout effortlessly connects the kitchen, dining area, and lounge, creating an ideal space for gatherings and entertaining. The lounge, bathed in natural light, opens onto a patio with beautiful garden views, perfect for relaxation or alfresco dining.

The kitchen is a chef's dream, featuring sleek cabinetry and ample counter space, keeping you connected to the living areas. Four well-appointed bedrooms, including a luxurious master suite, provide privacy and comfort, with stylishly finished bathrooms throughout.

Additional features include a double garage, visitor parking, and estate amenities, offering security and peace of...

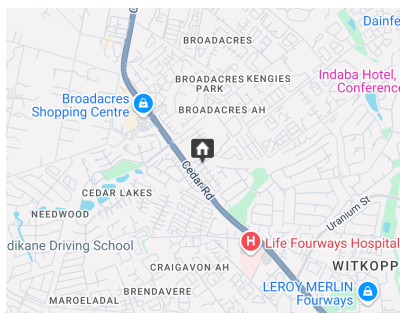
Features

Pets Allowed Yes

| | |
|-----------------|-----|
| Interior | |
| Bedrooms | 4 |
| Bathrooms | 2.5 |
| Recep. Rooms | 2 |
| Studies | 1 |

| | |
|---------------------|----|
| Exterior | |
| Garages | 2 |
| Carports / Parkings | 2 |
| Pool | No |

| | |
|--------------|-------------------|
| Sizes | |
| Land Size | 325m ² |



<https://www.malherbex.com>