



MALHERBEX™
PROPERTY GROUP



Willie Malherbe
0834257174
willie@malherbex.com

Contact Head Office

011 7869364

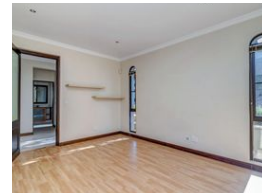
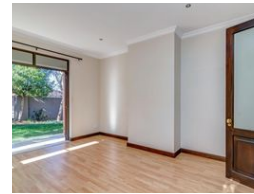
Unit 1 Cyrus House (Building 13) Mulberry Hill Office Park, Dainfern, Sandton, 2191

4 Bedroom House For Sale in Dainfern Golf Estate

UNDER OFFER



Web Ref RL1335



R5,495,000



Monthly Bond Repayment R56,718.75

Calculated over 20 years at 11% with no deposit.

Transfer Costs R462,257.00 **Bond Costs** R65,785.00

These calculations are only a guide. Please ask your conveyancer for exact calculations.

Monthly Levy R4,490

Inviting Family Haven

EXCLUSIVE SOLE AGENT:

Investment Sale with rental income

No Transfer Duty

Discover the allure of this contemporary four-bedroom house nestled within a secure estate. Offering a serene and harmonious lifestyle for you and your loved ones, it features three full bathrooms, including a luxurious main en-suite. This residence ensures abundant space for the entire family.

Step into the inviting ground floor, where three reception rooms adorned with a warm gas fireplace create the perfect haven for relaxation after a bustling day. The kitchen boasts solid wood cabinetry, granite countertops, a walk-in pantry, and a separate laundry/scullery, providing both storage and practicality.

The main suite of this stunning home is equipped with a walk-in wardrobe and a lavish en-suite bathroom. Open the doors to a spacious covered...

Features

Pets Allowed Yes

Interior

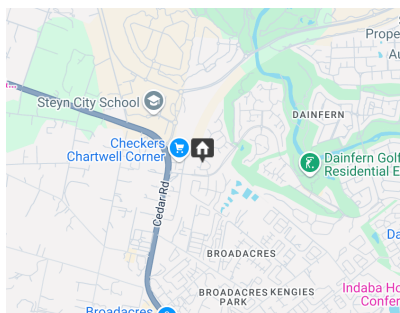
Bedrooms 4
Bathrooms 3
Kitchens 1
Recep. Rooms 3

Exterior

Garages 2
Carports / Parkings 2
Security No
Dom. Accom. 1
Pool Yes
Views No

Sizes

Land Size 576m²



<https://www.malherbex.com>