



MALHERBEX™
PROPERTY GROUP



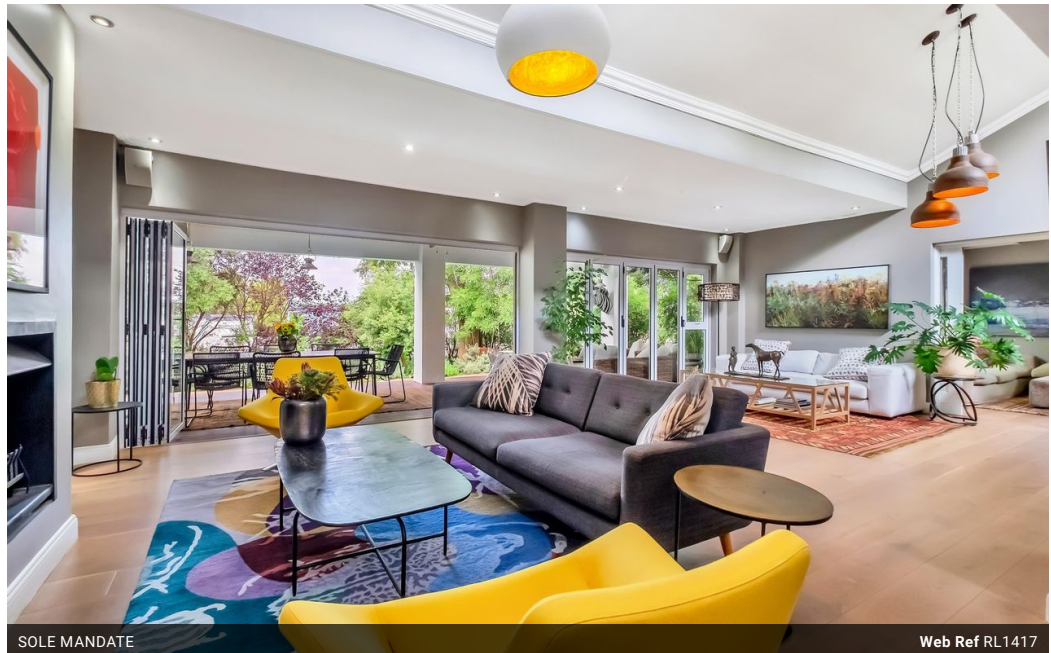
Willie Malherbe
0834257174
willie@malherbex.com

Contact Head Office

011 7869364

Unit 1 Cyrus House (Building 13) Mulberry Hill Office Park, Dainfern, Sandton, 2191

3 Bedroom House For Sale in Dainfern Golf Estate



SOLE MANDATE

Web Ref RL1417



R8,500,000

Monthly Bond Repayment R87,736.01

Calculated over 20 years at 11% with no deposit.

Transfer Costs R810,214.00 **Bond Costs** R80,035.00

These calculations are only a guide. Please ask your conveyancer for exact calculations.

Monthly Levy R4,290

3 4.5 2

Exquisite home on the golf course

EXCLUSIVE SOLE AGENT: We are proud to present a true gem in the Dainfern offering.

Recently renovated, the home offers high-quality finishes throughout in the form of oak flooring, bespoke kitchen with top-end appliances and dedicated wine room to name a few.

The home offers:

Large study

Three en-suite bedrooms with the main bedroom offering a his and hers bathroom with views over the golf course.

Bespoke open-plan kitchen with scullery.

Double garage with Solar system.

Swimming pool.

Staff accommodation.

Wine room.

Double lounges with fireplace and air-conditioning.

Large patio overlooking the garden and pool area.

Decking around the pool.

Features

Pets Allowed Yes

Interior

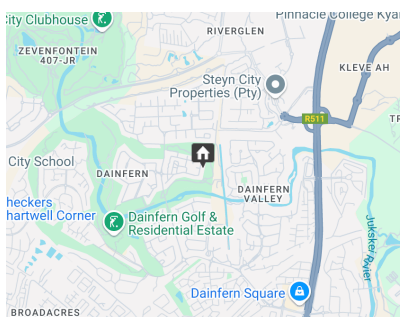
Bedrooms 3
Bathrooms 4.5
Recep. Rooms 3
Studies 1

Exterior

Garages 2
Dom. Accom. 1
Pool Yes
Views Yes

Sizes

Land Size 1,187m²



<https://www.malherbex.com>