



MALHERBEX™
PROPERTY GROUP



Willie Malherbe
0834257174
willie@malherbex.com

Contact Head Office

011 7869364

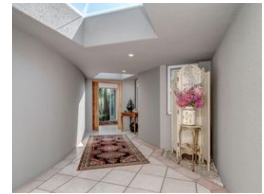
Unit 1 Cyrus House (Building 13) Mulberry Hill Office Park, Dainfern, Sandton, 2191

4 Bedroom House For Sale in Dainfern Golf Estate



SOLE MANDATE

Web Ref RL1418



R7,995,000

Monthly Bond Repayment R82,523.46
Calculated over 20 years at 11% with no deposit.

Transfer Costs R748,678.00 **Bond Costs** R75,285.00
These calculations are only a guide. Please ask your conveyancer for exact calculations.

Monthly Levy R4,290

4 4.5 2.5

Spacious Family Home with Modern Amenities, Private Retreats, and Exceptional Entertaining Spaces

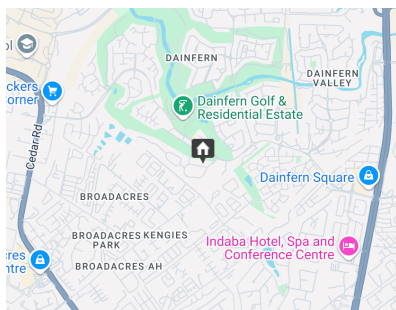
EXCLUSIVE SOLE AGENCY: Set on the golf course, this north facing home welcomes you to this spacious property, offering a perfect blend of comfort, functionality, and style.

The entrance, with its open roof, leads you into a bright and airy lounge and dining room area, creating an inviting atmosphere that flows seamlessly into the rest of the home. The property features four well-sized en-suite bedrooms, each with built-in cupboards, ensuring plenty of storage space. The main bedroom offers ultimate relaxation with air conditioning, a full en-suite bathroom, and a private balcony, perfect for unwinding while taking in the serene surroundings.

The home also includes a dedicated study area, ideal for remote work or quiet study. With two lounges, with air conditioning and a wood-burning fireplace, this home is perfect for...

Features

Pets Allowed	Yes		
Interior		Exterior	
Bedrooms	4	Garages	2.5
Bathrooms	4.5	Dom. Accom.	1
Recep. Rooms	3	Pool	Yes
Studies	1	Views	Yes
		Sizes	
		Floor Size	603m ²
		Land Size	1,167m ²



<https://www.malherbex.com>