



MALHERBEX™
PROPERTY GROUP



Willie Malherbe
0834257174
willie@malherbex.com

Contact Head Office

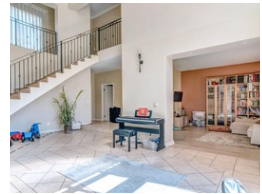
011 7869364

Unit 1 Cyrus House (Building 13) Mulberry Hill Office Park, Dainfern, Sandton, 2191

4 Bedroom House For Sale in Dainfern Golf Estate



Web Ref RL450



R6,900,000

4 4 4

Monthly Bond Repayment R71,221.00
Calculated over 20 years at 11% with no deposit.

Transfer Costs R622,766.00 **Bond Costs** R70,535.00

These calculations are only a guide. Please ask your conveyancer for exact calculations.

Monthly Levy R4,490

Elegant North-Facing Home in a Tranquil Estate

Discover this beautifully designed home featuring generous proportions, soaring ceilings, and a seamless open-plan layout. Nestled in a peaceful part of the estate, it's just a short walk to the pavilion, a serene dam, a children's play park, and scenic walking paths.

Property Features:

- 4 Spacious Bedrooms
- 4 Large Garages - with potential to convert into an additional bedroom or cottage
- 2 Lounges
- Elegant Dining Room
- Covered Patio Overlooking a Sparkling Pool
- Open-Plan Kitchen with Scullery
- Private Home Office
- Staff Accommodation
- Stylish Wooden & Tiled Flooring

Don't miss out on this exceptional home! Call now to arrange your private viewing.

Features

Pets Allowed Yes

Interior

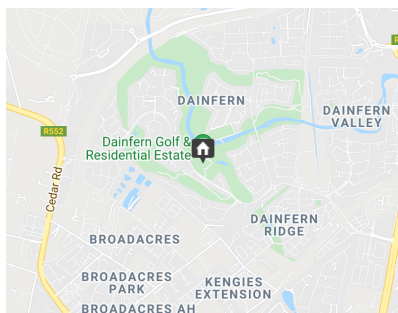
Bedrooms	4
Bathrooms	4
Kitchens	1
Recep. Rooms	3
Studies	1

Exterior

Garages	4
Security	Yes
Dom. Accom.	1
Pool	Yes
Views	Yes

Sizes

Floor Size	503m ²
Land Size	1,011m ²



<https://www.malherbex.com>