

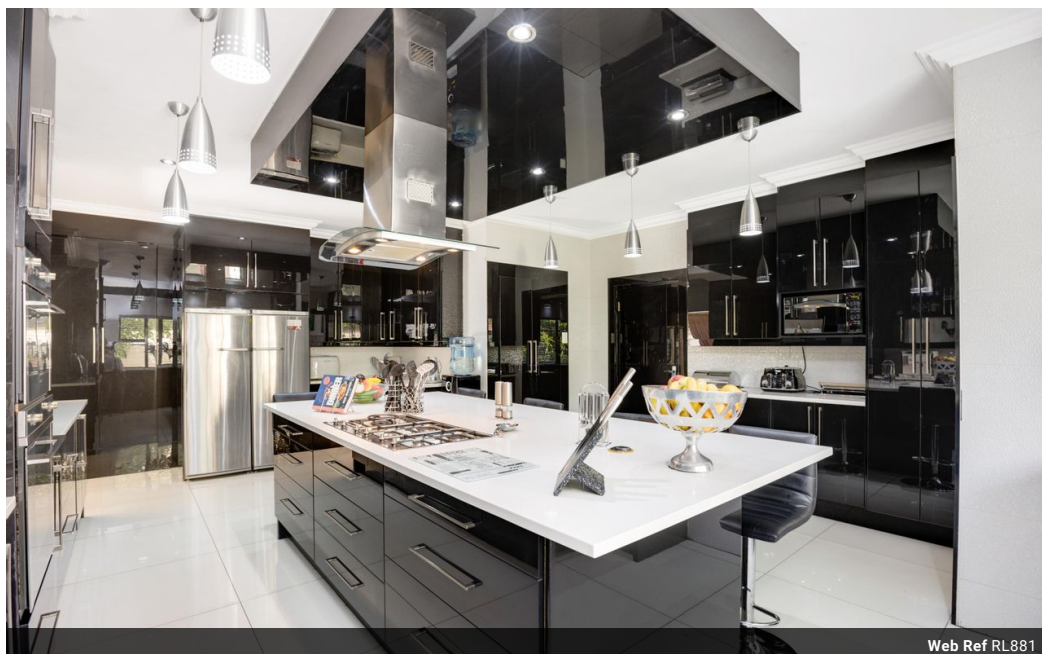


Willie Malherbe
0834257174
willie@malherbex.com

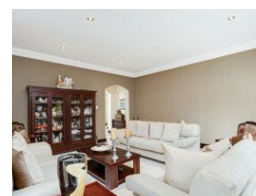
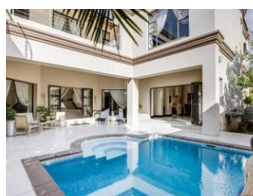
Contact Head Office

011 7869364

Unit 1 Cyrus House (Building 13) Mulberry Hill Office Park, Dainfern, Sandton, 2191



Web Ref RL881



R10,500,000

Monthly Bond Repayment R108,379.78
Calculated over 20 years at 11% with no deposit.

Transfer Costs R1,041,827.00 **Bond Costs** R89,535.00

These calculations are only a guide. Please ask your conveyancer for exact calculations.

Monthly Levy R4,490 **Monthly Rates** R4,000

5 4.5 3

Quality and finest finishes throughout

Please contact agent for address and book an appointment.

Welcome to your new luxurious family home in the exclusive Dainfern Golf Estate! This modern masterpiece is impeccably designed to offer you the ultimate living experience, from the grand double-volume entrance hall that sets the tone for the rest of the house to the four reception rooms that cater to all your entertaining needs.

Boasting a formal lounge, family living room, formal dining room, and entertainers room with a gas fireplace, this home is perfect for those who love to entertain. The aluminium stacking doors on the patio overlooking the private swimming pool create an ideal ambiance for outdoor gatherings.

The large modern kitchen is a chef's dream, equipped with the finest features and finishes, a large center island with a gas hob and two ovens,...

Features

Pets Allowed	Yes				
Interior		Exterior		Sizes	
Bedrooms	5	Garages	3	Floor Size	613m ²
Bathrooms	4.5	Security	Yes	Land Size	992m ²
Kitchens	1	Dom. Accom.	1		
Recep. Rooms	4	Pool	Yes		
Studies	1				

