



MALHERBEX™
PROPERTY GROUP



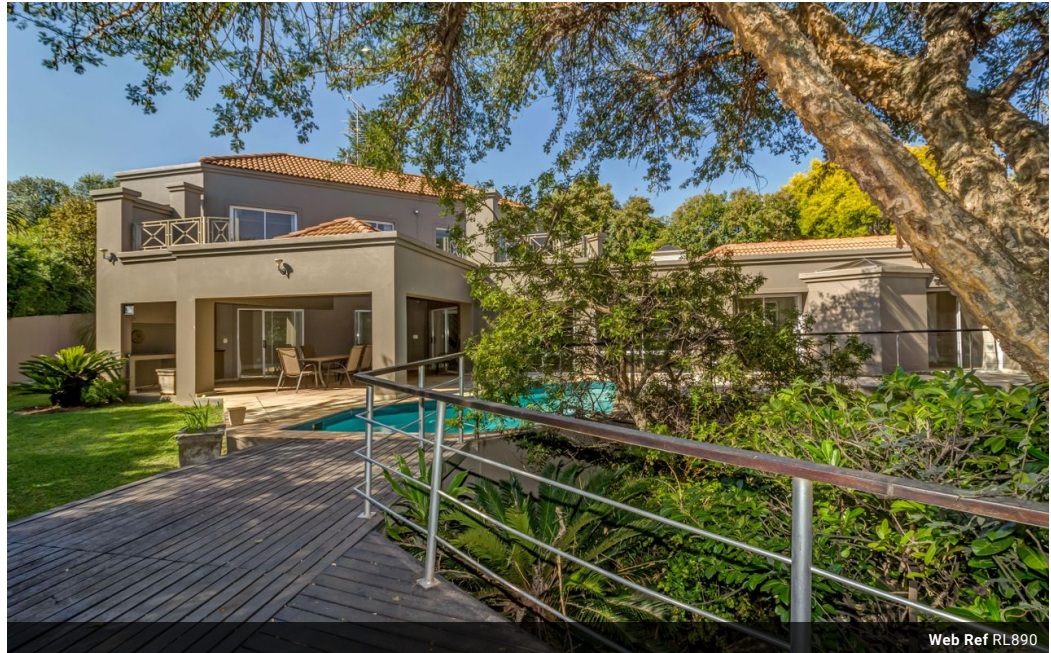
Willie Malherbe
0834257174
willie@malherbex.com

Contact Head Office

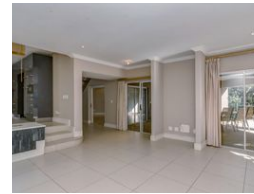
011 7869364

Unit 1 Cyrus House (Building 13) Mulberry Hill Office Park, Dainfern, Sandton, 2191

5.5 Bedroom House For Sale in Dainfern Golf Estate



Web Ref RL890



R5,995,000

Monthly Levy R4,490

Monthly Rates R3,500

5.5 5.5 4

5 Bedroom home in Dainfern Golf Estate

Discover the epitome of luxury living with this stunning 5-bedroom house, now available in the exclusive Dainfern Golf Estate. This modern and chic home is perfect for those with discerning taste and boasts an enviable location on a beautifully treed stand in a quiet cul-de-sac.

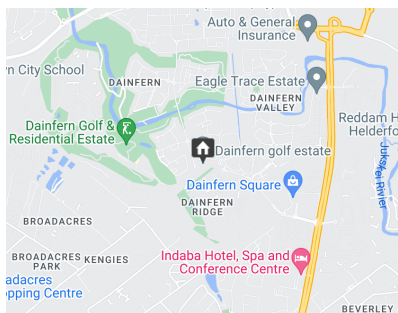
The home features a spacious and bright interior that integrates with a covered patio, sparkling pool, and lush garden with mature trees, offering an idyllic oasis of tranquility.

The modern and fully-equipped kitchen includes a separate laundry/scullery area and walk-in pantry and flows effortlessly into the living areas. The home also includes a generously sized study/office that can easily be used as a guest cottage or staff quarters, complete with its own kitchen, lounge, and bedroom.

Four spacious bedrooms and four bathrooms (two...

Features

Pets Allowed		Interior		Exterior		Sizes	
	Yes	Bedrooms	5.5	Garages	4	Floor Size	584m ²
		Bathrooms	5.5	Security	Yes	Land Size	1,149m ²
		Kitchens	1	Dom. Accom.	1		
		Recep. Rooms	3	Pool	Yes		
		Studies	1	Views	Yes		



<https://www.malherbex.com>