



**MALHERBEX™**  
PROPERTY GROUP



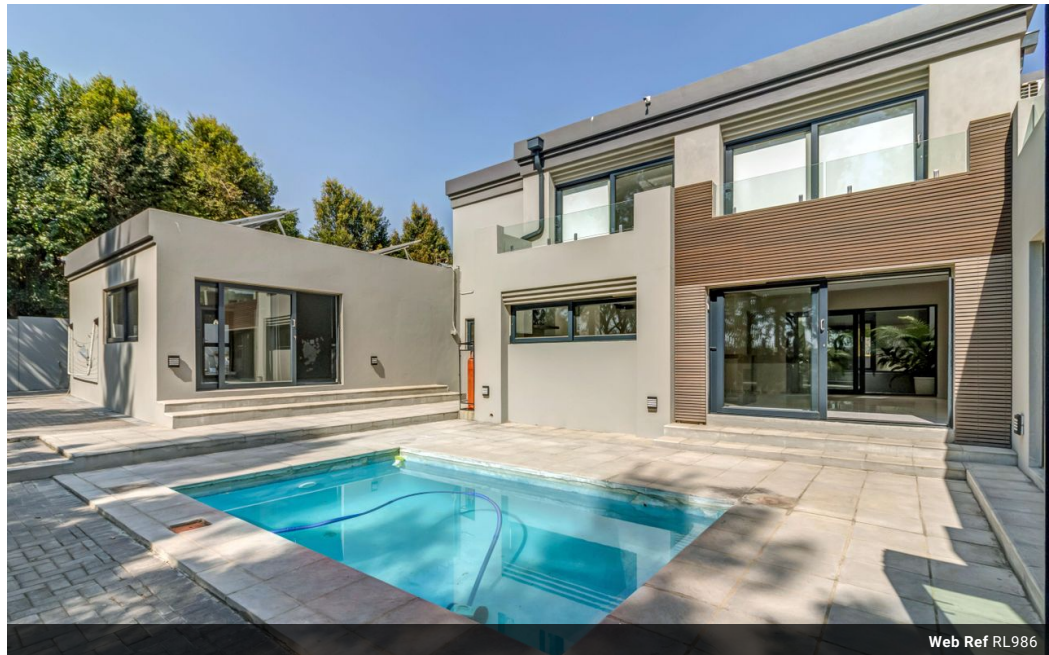
**Willie Malherbe**  
0834257174  
willie@malherbex.com

Contact Head Office

011 7869364

Unit 1 Cyrus House (Building 13) Mulberry Hill Office Park, Dainfern, Sandton, 2191

## 5 Bedroom House For Sale in Dainfern Golf Estate



Web Ref RL986



**R7,900,000**

5 5.5 2

**Monthly Bond Repayment** R81,542.88

Calculated over 20 years at 11% with no deposit.

**Transfer Costs** R738,228.00 **Bond Costs** R75,285.00

These calculations are only a guide. Please ask your conveyancer for exact calculations.

**Monthly Levy** R4,490

### Exquisite in design, space and grandeur

Presenting an exquisite contemporary haven within the prestigious enclave of Dainfern Golf Estate. This newly-renovated masterpiece awaits, inviting you to experience luxury living at its finest. Poised with a captivating north-facing aspect overlooking a lush greenbelt, this modern marvel redefines gracious living.

Step into a realm where open-plan opulence merges seamlessly with premium aesthetics. Immerse yourself in a symphony of fine design, where marble surfaces grace both countertops and floors, elevating every moment to an experience of elegance.

As you enter, a vast entertainment expanse unfolds, bathed in natural light that pours through expansive aluminium sliding doors and windows. The ambiance is a marriage of modernity and comfort, bathed in a palette of contemporary hues that evoke serenity throughout....

### Features

**Pets Allowed** Yes

#### Interior

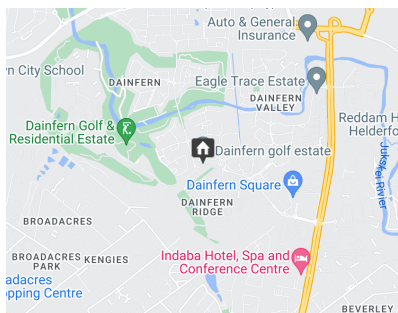
Bedrooms 5  
Bathrooms 5.5  
Recep. Rooms 3  
Studies 1

#### Exterior

Garages 2  
Carports / Parkings 1  
Pool Yes

#### Sizes

Floor Size 599m<sup>2</sup>  
Land Size 1,004m<sup>2</sup>



<https://www.malherbex.com>