



MALHERBEX™
PROPERTY GROUP



Willie Malherbe
0834257174
willie@malherbex.com

Contact Head Office

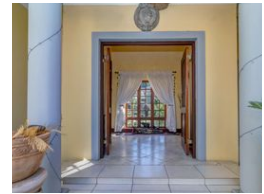
011 7869364

Unit 1 Cyrus House (Building 13) Mulberry Hill Office Park, Dainfern, Sandton, 2191

4 Bedroom House For Sale in Dainfern Ridge Estate



Web Ref RL1040



R4,550,000

Monthly Bond Repayment R46,964.57
Calculated over 20 years at 11% with no deposit.

Transfer Costs R348,509.00 **Bond Costs** R57,265.00
These calculations are only a guide. Please ask your conveyancer for exact calculations.

Monthly Levy R2,990

4 3 2

Welcome to a life of luxury and convenience

This beautiful single-story gem exudes warmth and character, making it the perfect place to call your own. With inviting reception rooms, a cozy lounge, a stylish dining room, and a comfortable TV room featuring a wood fireplace, you'll feel right at home.

Step outside to your private oasis - an undercover patio overlooking a sun-drenched pool and a lush garden. The heart of the home is the country-style kitchen with granite countertops and a separate scullery, perfect for culinary adventures.

This home offers four bedrooms and three bathrooms, with the main bedroom offering garden views. Designed for entertaining, it enjoys a prime, private location on the greenbelt.

Additional features include a spacious laundry room, a double garage, and staff accommodation.

Experience the serene lifestyle of Dainfern Ridge...

Features

Pets Allowed Yes

Interior

Bedrooms	4
Bathrooms	3
Kitchens	1
Recep. Rooms	3

Exterior

Garages	2
Dom. Accom.	1
Pool	Yes

Sizes

Floor Size	380m ²
Land Size	989m ²



<https://www.malherbex.com>