



MALHERBEX™
PROPERTY GROUP



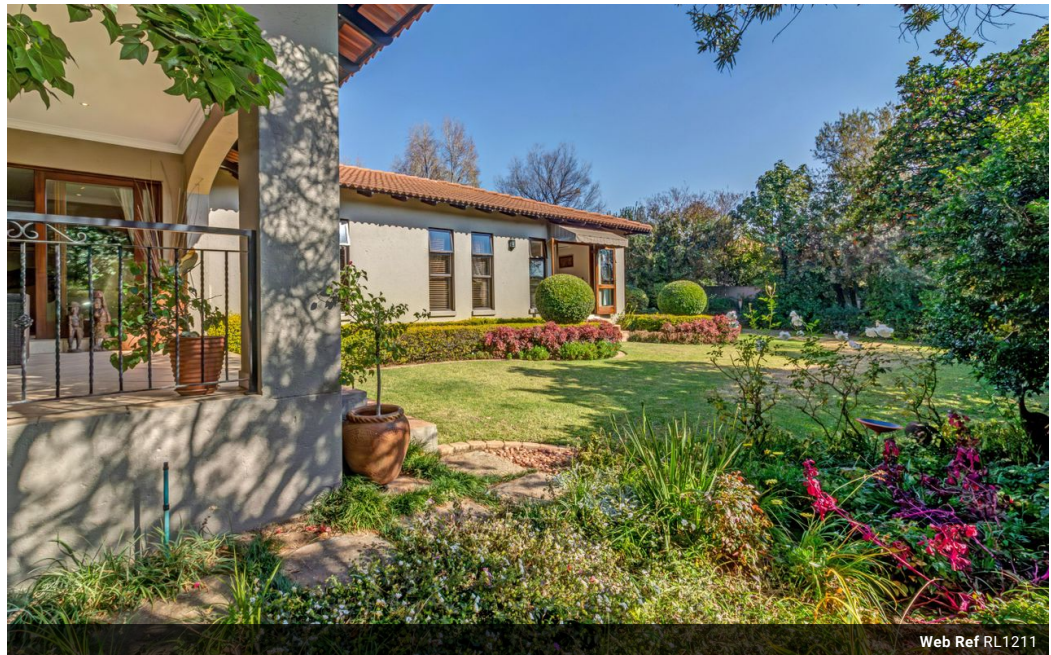
Willie Malherbe
0834257174
willie@malherbex.com

Contact Head Office

011 7869364

Unit 1 Cyrus House (Building 13) Mulberry Hill Office Park, Dainfern, Sandton, 2191

3 Bedroom House For Sale in Dainfern Ridge Estate



Web Ref RL1211



R3,950,000

Monthly Bond Repayment R40,771.44
Calculated over 20 years at 11% with no deposit.

Transfer Costs R275,550.00 **Bond Costs** R51,610.00
These calculations are only a guide. Please ask your conveyancer for exact calculations.

Monthly Levy R3,035

3 2 2

Discover Your Dream Home in Dainfern Ridge

Imagine living in a single-storey sanctuary, where convenience, tranquility, and beauty converge. Situated close to the water edge of the lovely dam and parklike area in the highly sought-after Dainfern Ridge estate, this stunning home offers the perfect blend of elegance and comfort.

Step inside to find a sunlit, open-plan living area that effortlessly combines the lounge, dining room, and kitchen. This spacious layout is perfect for social gatherings and flows seamlessly onto a covered patio. The patio, with its picturesque garden backdrop, is ideal for entertaining and serene relaxation. As evening descends, the garden transforms into soft illuminated cozy outdoor lighting. It's the perfect place to unwind and enjoy the calm of your surroundings. There is a sparkling swimming pool, walking distance to the clubhouse. No...

Features

Pets Allowed Yes

Interior

Bedrooms 3
Bathrooms 2
Kitchens 1
Recep. Rooms 2

Exterior

Garages 2
Dom. Accom. 1
Pool Yes

Sizes

Floor Size 256m²
Land Size 799m²



<https://www.malherbex.com>