



MALHERBEX™
PROPERTY GROUP



Willie Malherbe
0834257174
willie@malherbex.com

Contact Head Office

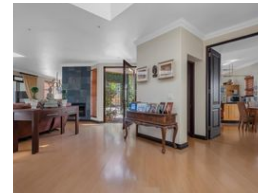
011 7869364

Unit 1 Cyrus House (Building 13) Mulberry Hill Office Park, Dainfern, Sandton, 2191

4 Bedroom House For Sale in Dainfern Ridge Estate



Web Ref RL1253



R4,999,000

4 3.5 2

Monthly Bond Repayment R51,599.10
Calculated over 20 years at 11% with no deposit.

Transfer Costs R402,235.00 **Bond Costs** R61,035.00
These calculations are only a guide. Please ask your conveyancer for exact calculations.

Monthly Levy R3,390

4 Bedroom home in Dainfern Ridge Estate

ON SHOW SUNDAY 17TH NOVEMBER FROM 2PM-4PM BY APPOINTMENT
Call agent to make an appointment and for access

A home with all the luxury you need. Nestled in the prestigious Dainfern Ridge Estate, just a stone's throw from Dainfern College, a north-facing gem bathed in natural light. This exquisite four bedroom home promises luxurious living with every modern convenience you could desire. Imagine waking up in the main suite, your sanctuary of tranquility. The stunning en-suite bathroom invites you to start the day with a touch of elegance, while the walk-in dressing room, with its cupboards reaching the ceiling, offers ample space for your wardrobe. Sliding glass doors lead you to the garden, where the morning sun greets you. With four skylights, underfloor heating, and two air conditioners in the home, comfort is assured...

Features

Pets Allowed Yes

Interior

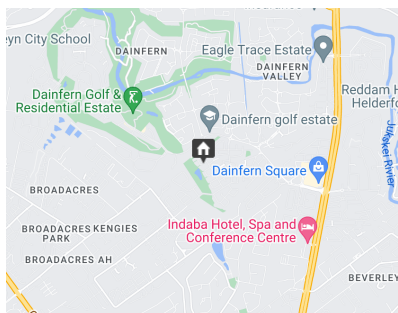
Bedrooms	4
Bathrooms	3.5
Kitchens	1
Recep. Rooms	4
Studies	2

Exterior

Garages	2
Security	Yes
Dom. Accom.	1
Pool	Yes

Sizes

Floor Size	394m ²
Land Size	860m ²



<https://www.malherbex.com>