



**MALHERBEX™**  
PROPERTY GROUP



**Willie Malherbe**  
0834257174  
willie@malherbex.com

Contact Head Office

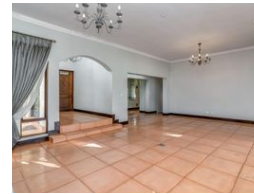
011 7869364

Unit 1 Cyrus House (Building 13) Mulberry Hill Office Park, Dainfern, Sandton, 2191

## 3 Bedroom House For Sale in Dainfern Ridge Estate



Web Ref RL906



**R4,595,000**

**Monthly Bond Repayment** R47,429.06  
Calculated over 20 years at 11% with no deposit.

**Transfer Costs** R353,459.00    **Bond Costs** R57,265.00  
These calculations are only a guide. Please ask your conveyancer for exact calculations.

**Monthly Levy** R2,895

3    2.5    2

### Appealing, single storey family home with solar

This home is ideally positioned on an 845 sqm elevated stand in the popular and secure Dainfern Ridge Estate.

Enter through a bright entrance hall to an open-plan living area with a wood fireplace and stacking doors opening to a large covered patio with a delightful view giving a sense of openness and tranquil space.

The kitchen has recently been fitted with a highly efficient induction hob and the scullery allows for three appliances.

Three sunny, generously sized bedrooms, m.e.s. with a walk-in dresser, two bathrooms, a guest cloakroom, and a domestic helper's room make this a comfortable family home.

All offers will be presented.

A state-of-the-art solar and backup power system is a huge advantage and convenience of this property.

Council-approved plans for various extensions of the property are in...

### Features

Pets Allowed		Yes			
Interior		Exterior		Sizes	
Bedrooms	3	Garages	2	Floor Size	280m <sup>2</sup>
Bathrooms	2.5	Security	Yes	Land Size	845m <sup>2</sup>
Recep. Rooms	2	Dom. Accom.	1		
Studies	1	Pool	Yes		
Furnished	No	Views	Yes		



<https://www.malherbex.com>