



MALHERBEX™
PROPERTY GROUP



Willie Malherbe
0834257174
willie@malherbex.com

Contact Head Office

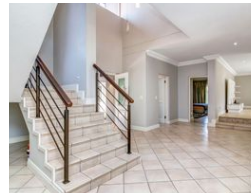
011 7869364

Unit 1 Cyrus House (Building 13) Mulberry Hill Office Park, Dainfern, Sandton, 2191

5 Bedroom House For Sale in Dainfern Valley Estate



Web Ref RL1319



R6,995,000

5 4.5 4

Monthly Bond Repayment R72,201.58
Calculated over 20 years at 11% with no deposit.

Transfer Costs R633,216.00 **Bond Costs** R70,535.00

These calculations are only a guide. Please ask your conveyancer for exact calculations.

Monthly Levy R4,278

Five bedroom home in Dainfern Valley Estate

Nestled in the prestigious Dainfern Valley Estate, this magnificent five-bedroom home is situated on a corner stand, and exudes elegance and luxury, perfect for a large family that loves to entertain.

The home welcomes you with an impressive entrance that leads into bright, sunlit spaces, creating a seamless flow from indoors to the outdoors. A large covered patio overlooks the sparkling pool and manicured garden, complete with a built-in gas braai for outdoor dining.

Inside, the elegant lounge features a gas fireplace and air conditioning, offering a warm retreat, while the spacious family room connects effortlessly with the gourmet kitchen and sophisticated dining area. The kitchen is designed for culinary enthusiasts, equipped with a stunning lve oven and hob, a second oven, a large pantry, and a scullery, providing...

Features

Pets Allowed Yes

Interior

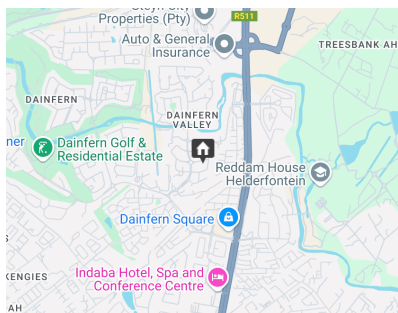
Bedrooms	5
Bathrooms	4.5
Kitchens	1
Recep. Rooms	3
Studies	1

Exterior

Garages	4
Dom. Accom.	1
Pool	Yes

Sizes

Floor Size	570m ²
Land Size	899m ²



<https://www.malherbex.com>