



MALHERBEX™  
PROPERTY GROUP



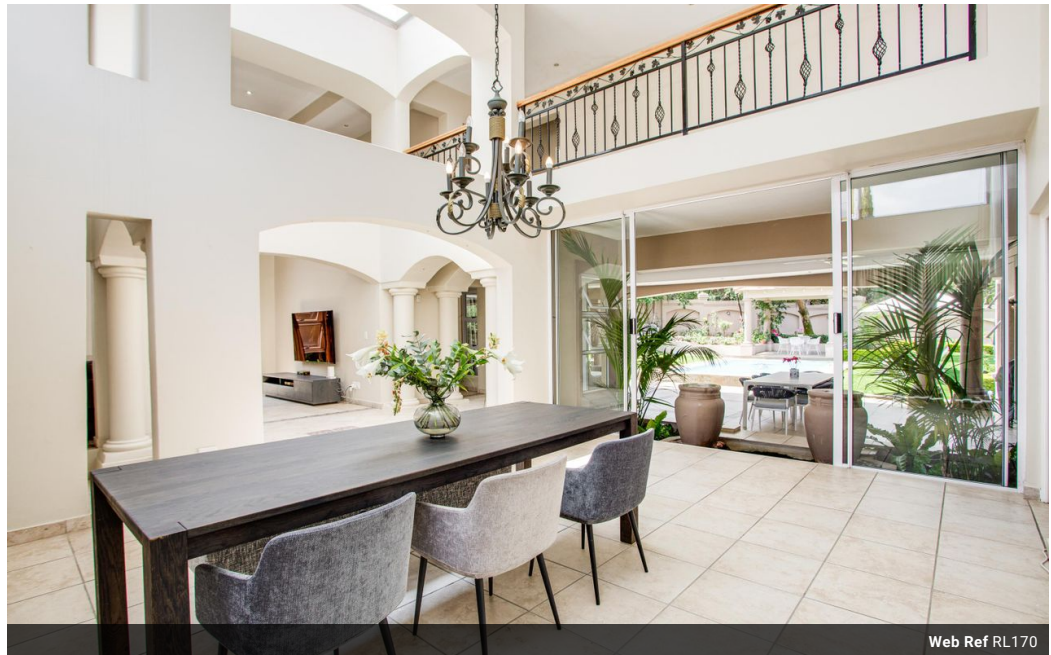
**Willie Malherbe**  
0834257174  
willie@malherbex.com

Contact Head Office

011 7869364

Unit 1 Cyrus House (Building 13) Mulberry Hill Office Park, Dainfern, Sandton, 2191

## 4 Bedroom House For Sale in Dainfern Valley Estate



Web Ref RL170



# R7,200,000

**Monthly Bond Repayment** R74,317.56  
Calculated over 20 years at 11% with no deposit.

**Transfer Costs** R661,228.00    **Bond Costs** R75,285.00  
These calculations are only a guide. Please ask your conveyancer for exact calculations.

**Monthly Levy** R4,510

4    3.5    2.5

### The perfect family home

Impeccable four bedroom family home available in the heart of Dainfern Valley Estate. The house is situated in a quiet part of the estate with a fantastic curbside appeal. You are welcomed by an impressive double volume foyer and double volume reception rooms with sliding doors that connect the covered patio with the lounges and dining area. Large covered patio overlooks the garden and swimming pool area with garden gazebo. The home offers a large main bedroom on the ground floor overlooking the garden with the remaining three bedrooms situated upstairs, each having a small balcony. The study is downstairs. Open-plan kitchen and scullery lead to the dining and family lounge with two adjacent garages and staff accommodation. Truly in perfect condition - walk in and start enjoying the Dainfern Valley lifestyle.

Call today to...

### Features

**Pets Allowed** Yes

#### Interior

Bedrooms	4
Bathrooms	3.5
Kitchens	1
Recep. Rooms	4
Studies	1

#### Exterior

Garages	2.5
Carports / Parkings	4
Dom. Accom.	1
Pool	Yes

#### Sizes

Floor Size	570m <sup>2</sup>
Land Size	1,360m <sup>2</sup>



<https://www.malherbex.com>