



**MALHERBEX™**  
PROPERTY GROUP



**Janine Meyer**  
0716890860  
janine@malherbex.com

Contact Head Office

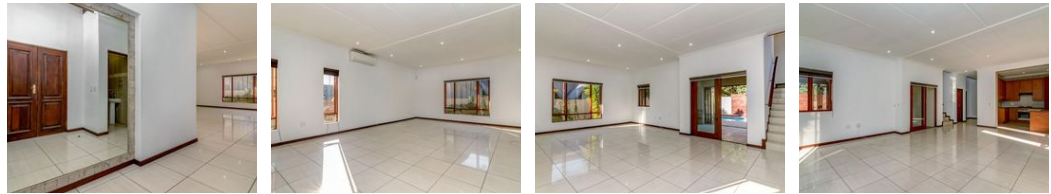
011 7869364

Unit 1 Cyrus House (Building 13) Mulberry Hill Office Park, Dainfern, Sandton, 2191

## 3 Bedroom House For Sale in Douglasdale



Web Ref RL966



**R2,950,000**

**Monthly Bond Repayment** R30,449.56  
Calculated over 20 years at 11% with no deposit.

**Transfer Costs** R156,055.00    **Bond Costs** R42,185.00  
These calculations are only a guide. Please ask your conveyancer for exact calculations.

3    2.5    2

**Monthly Levy** R3,030    **Monthly Rates** R1,346

### Spacious 3 Bedroom Cluster Located in the Hamlin Manor

If you are looking for a home that combines comfort, style, and convenience, look no further than this stunning property in Douglasdale. This home offers 3 spacious bedrooms, 2.5 bathrooms, a large open-plan lounge and dining area that leads to an enclosed covered patio overlooking the large pool. The kitchen is a chef's dream, with granite tops, gas stove, a large pantry cupboard, a separate scullery with space for 3 under counter appliances and plenty of storage space.

The guest cloakroom is conveniently located near the entrance hall, and the double garage provides secure parking for your vehicles. The property is also pet-friendly, so your furry friends are welcome.

This home is ideal for families who love to entertain. You can host gatherings on the patio, swim in the pool, or relax in the garden. The property is...

### Features

<b>Pets Allowed</b>	Yes			
<b>Interior</b>		<b>Exterior</b>		<b>Sizes</b>
Bedrooms	3	Garages	2	Floor Size
Bathrooms	2.5	Security	Yes	240m <sup>2</sup>
Kitchens	1	Pool	Yes	
Recep. Rooms	2			
Furnished	No			



<https://www.malherbex.com>