



**MALHERBEX™**  
PROPERTY GROUP



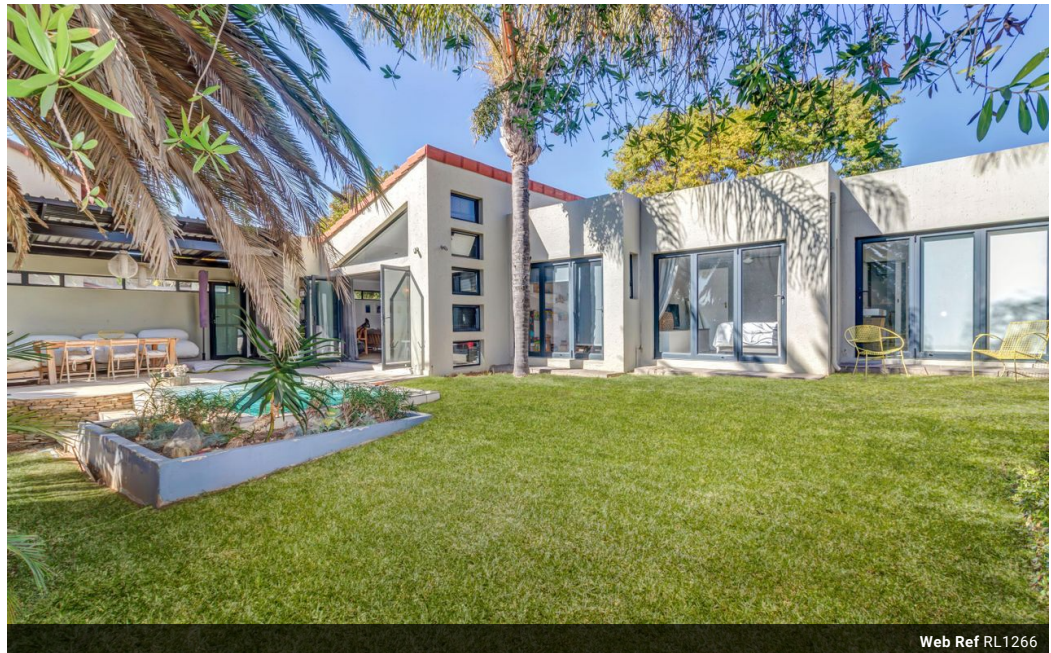
**Janine Meyer**  
0716890860  
janine@malherbex.com

Contact Head Office

011 7869364

Unit 1 Cyrus House (Building 13) Mulberry Hill Office Park, Dainfern, Sandton, 2191

## 3 Bedroom House For Sale in Lonehill



Web Ref RL1266



R2,950,000

3 Bedrooms 2 Bathrooms 1 Carport

**Monthly Bond Repayment** R30,449.56  
Calculated over 20 years at 11% with no deposit.

**Transfer Costs** R156,055.00 **Bond Costs** R42,185.00

These calculations are only a guide. Please ask your conveyancer for exact calculations.

**Monthly Levy** R2,660 **Monthly Rates** R1,246

### Modern 3 Bedroom House for Sale

Discover the epitome of modern living in this light and spacious three-bedroom, two-bathroom home located in the highly sought-after estate in Lonehill. This beautifully designed property invites you to experience a lifestyle of comfort and elegance.

As you step inside, you are greeted by an open-plan living area that seamlessly blends contemporary design with warmth and functionality. The abundant natural light pouring through large windows highlights the sleek finishes and clean lines, creating an atmosphere that is both inviting and sophisticated. Each of the three generously sized bedrooms offers a serene retreat, perfect for rest and relaxation.

The master bedroom features an en-suite bathroom, designed with luxury and convenience in mind. The second bathroom is equally stylish, catering to both residents and guests...

### Features

**Pets Allowed** Yes

#### Interior

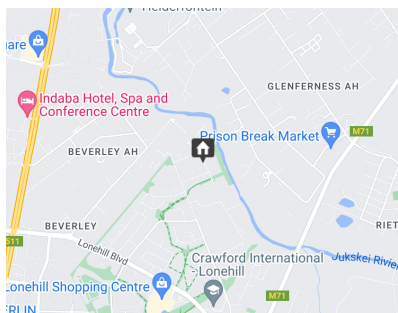
Bedrooms	3
Bathrooms	2
Recep. Rooms	2
Studies	1

#### Exterior

Garages	1
Carports / Parkings	2
Pool	Yes

#### Sizes

Land Size	500m <sup>2</sup>
-----------	-------------------



<https://www.malherbex.com>