



MALHERBEX™
PROPERTY GROUP



Elisha Botterill
0845558155
elisha@malherbex.com

Contact Head Office

011 7869364

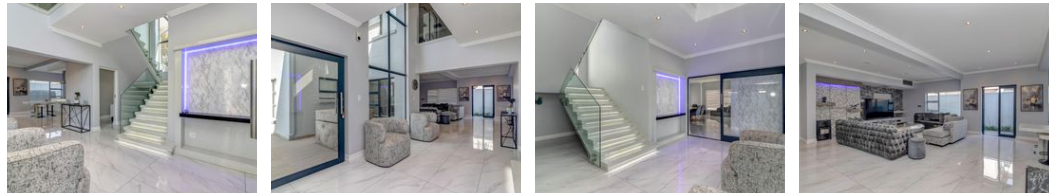
Unit 1 Cyrus House (Building 13) Mulberry Hill Office Park, Dainfern, Sandton, 2191

4 Bedroom House To Let in Helderfontein Estate



SOLE MANDATE

Web Ref RL1344



R60,000 pm

Monthly Levy R4,230

Lease Period 12 months

Availability Immediately

Deposit R70,000

Annual Escalation -

4 4.5 3

Modern and Stylish Home

Exclusive mandate.

This modern masterpiece presents an unrivaled combination of comfort, style, and elegance. Boasting four bedrooms, each with its own en suite bathroom, this property is the epitome of contemporary living.

Step inside and be captivated by the seamless design and meticulous attention to detail. The home offers two spacious living rooms, providing ample space for relaxation and entertainment. The open-plan kitchen is a chef's delight, featuring top-of-the-line integrated appliances and a sophisticated design that will inspire culinary creativity. The adjacent dining room creates a perfect atmosphere for unforgettable family gatherings, while the bar area adds a touch of sophistication for entertaining friends.

One of the highlights of this stunning home is the seamless integration of indoor and outdoor...

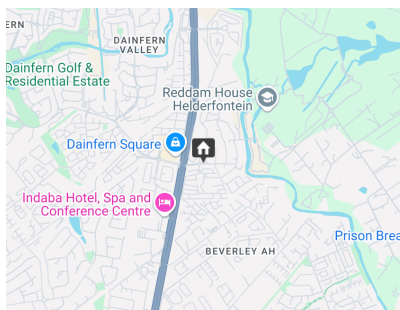
Features

Pets Allowed Yes

Interior	
Bedrooms	4
Bathrooms	4.5
Kitchens	1
Recep. Rooms	4
Studies	1
Furnished	No

Exterior	
Garages	3
Carports / Parkings	3
Security	Yes
Dom. Accom.	1
Pool	Yes

Sizes	
Floor Size	500m ²
Land Size	700m ²



<https://www.malherbex.com>