



MALHERBEX™
PROPERTY GROUP



Willie Malherbe
0834257174
willie@malherbex.com

Contact Head Office

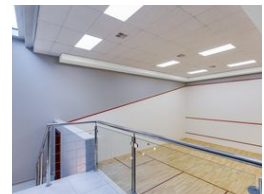
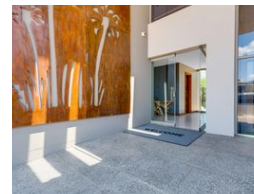
011 7869364

Unit 1 Cyrus House (Building 13) Mulberry Hill Office Park, Dainfern, Sandton, 2191

9 Bedroom House To Let in Sable Hills



Web Ref RL887



R250,000 pm

Monthly Levy R3,420

Lease Period 12 months

Availability Negotiable

Deposit - Annual Escalation -

9 10 10

Palatial home nestled in nature

JOINT EXCLUSIVE MANDATE: We are proud to present the finest home Sable Hills has to offer. Set across three levels, the home offers the ultimate in opulent living:

- Nine en-suite bedrooms
- Large Cinema room
- Elevator servicing the three levels
- Two central kitchens and two kitchenettes
- Ten garages
- Home office
- Multiple lounges
- Home automation
- Central Airconditioning
- Bamboo flooring
- Swimming pool
- Jacuzzi
- Squash court
- Multiple fireplaces
- Pizza oven

Features

Pets Allowed Yes

Interior

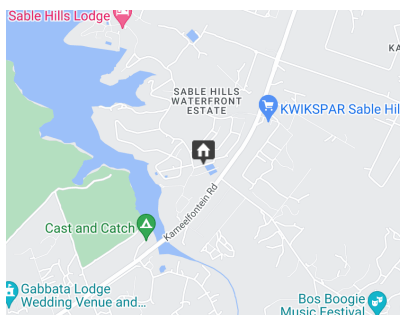
Bedrooms	9
Bathrooms	10
Kitchens	3
Recep. Rooms	5
Studies	1
Furnished	No

Exterior

Garages	10
Dom. Accom.	1
Pool	Yes

Sizes

Floor Size	1,380m ²
Land Size	1,634m ²



<https://www.malherbex.com>