



MALHERBEX™
PROPERTY GROUP



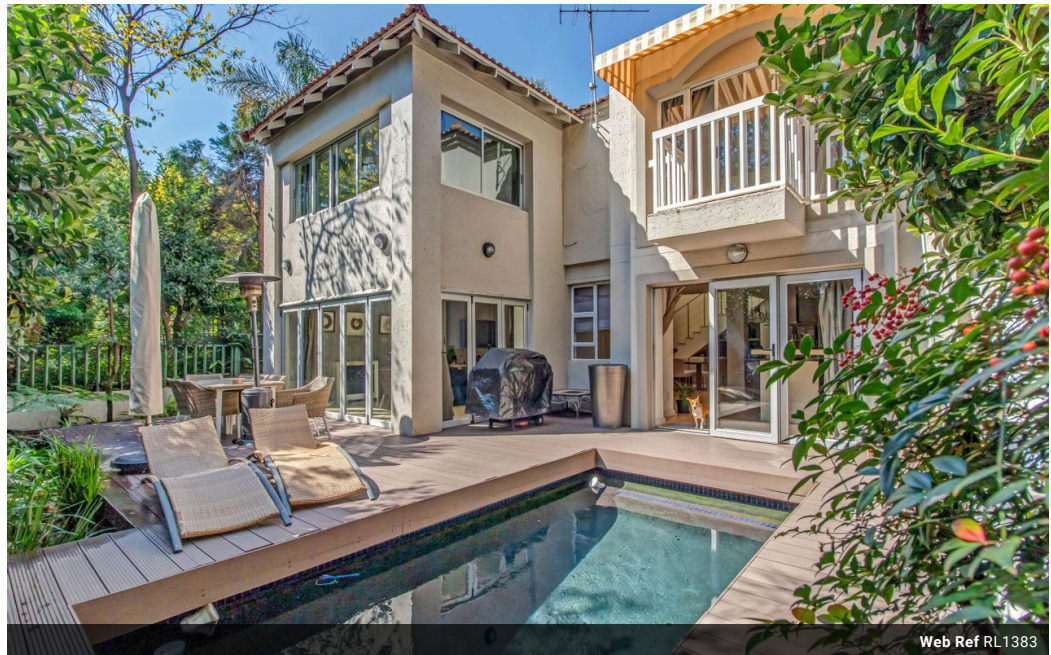
Elisha Botterill
0845558155
elisha@malherbex.com

Contact Head Office

011 7869364

Unit 1 Cyrus House (Building 13) Mulberry Hill Office Park, Dainfern, Sandton, 2191

3 Bedroom Freehold To Let in Dainfern Golf Estate



Web Ref RL1383



R35,000 pm

Monthly Levy R4,490 **Lease Period** 12 months **Availability** Immediately
Deposit - **Annual Escalation** -

3 3.5 2

3 Bedroom Lock up and go In Secure Estate

This Modern 3-bedroom double-story home effortlessly combines luxury and comfort, offering the perfect sanctuary for those looking for a place to call home.

On the lower level, the bright and spacious dining and lounge areas provide an ideal setting for unwinding after a busy day or simply entertaining loved ones. The modern tiled flooring enhances the overall design, creating a sleek and inviting atmosphere. The lounge opens out to a deck, overlooking the swimming pool and beautifully landscaped garden.

The well-appointed kitchen is a chef's dream, thoughtfully designed to combine functionality with ease, making meal preparation both simple and enjoyable.

Upstairs, you'll find three generous-sized bedrooms, all with their own ensuite bathrooms ensuring convenience and privacy for all residents.

last but not least...

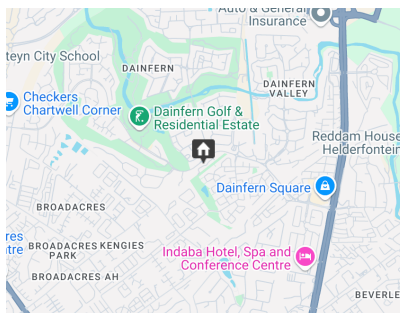
Features

Pets Allowed Yes

Interior
Bedrooms 3
Bathrooms 3.5
Recep. Rooms 2
Furnished No

Exterior
Garages 2
Pool Yes

Sizes
Land Size 448m²



<https://www.malherbex.com>