



MALHERBEX™
PROPERTY GROUP



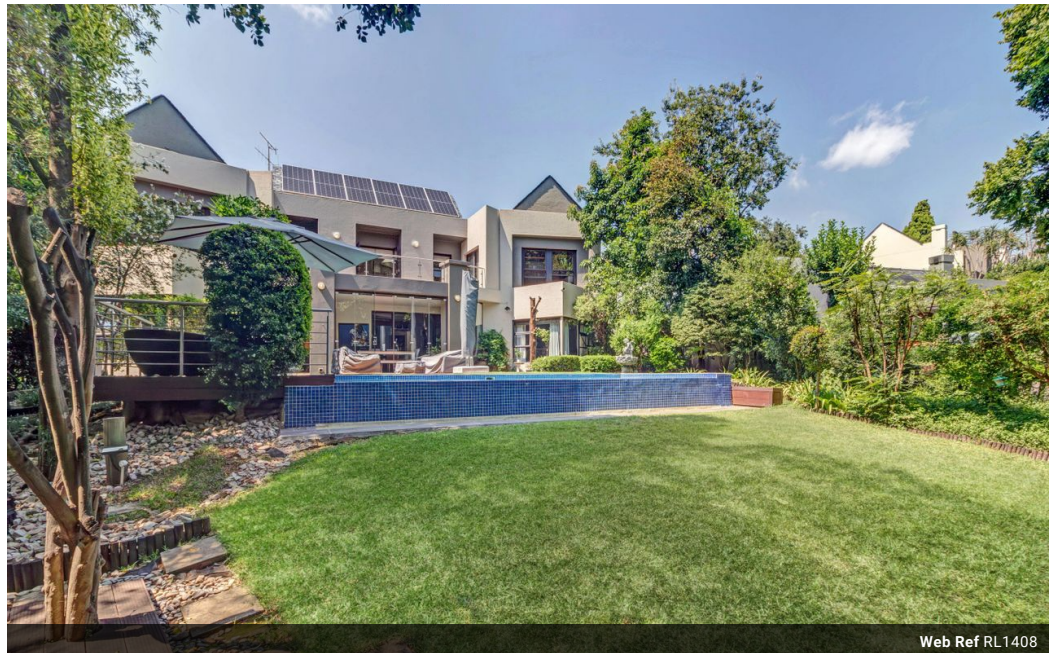
Elisha Botterill
0845558155
elisha@malherbex.com

Contact Head Office

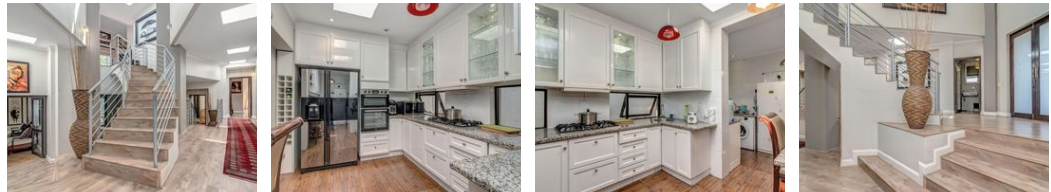
011 7869364

Unit 1 Cyrus House (Building 13) Mulberry Hill Office Park, Dainfern, Sandton, 2191

4 Bedroom Freehold To Let in Dainfern Golf Estate



Web Ref RL1408



R55,000 pm

Monthly Levy R4,490 Lease Period 12 months Availability Immediately
Deposit - Annual Escalation -

4 2.5 2

Tranquil 4 Bedroom Family Home In Secure Estate

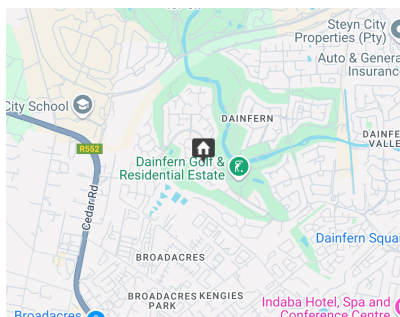
This lovely fully furnished 4-bedroom home is a perfect blend of elegance and comfort, offering ample space for both family living and entertaining.

The lower level of the home is designed for effortless living and entertaining. Two inviting lounges offer versatile spaces, whether you want to relax with loved ones or host friends. The formal dining room provides an elegant setting for family meals or special occasions. The kitchen is a combination of both functionality and style and is fully equipped with appliances, ample counter space, and cabinetry, making it perfect for preparing meals and entertaining guests.

Step outside to the lovely enclosed patio, an ideal spot to unwind or entertain. The space flows seamlessly into the garden, where you can enjoy stunning views of the lush greenery and sparkling pool - perfect...

Features

Pets Allowed	Yes		
Interior		Exterior	Sizes
Bedrooms	4	Garages	2
Bathrooms	2.5	Dom. Accom.	1
Recep. Rooms	3	Pool	Yes
Studies	1		
Furnished	Yes		Land Size 703m ²



<https://www.malherbex.com>