

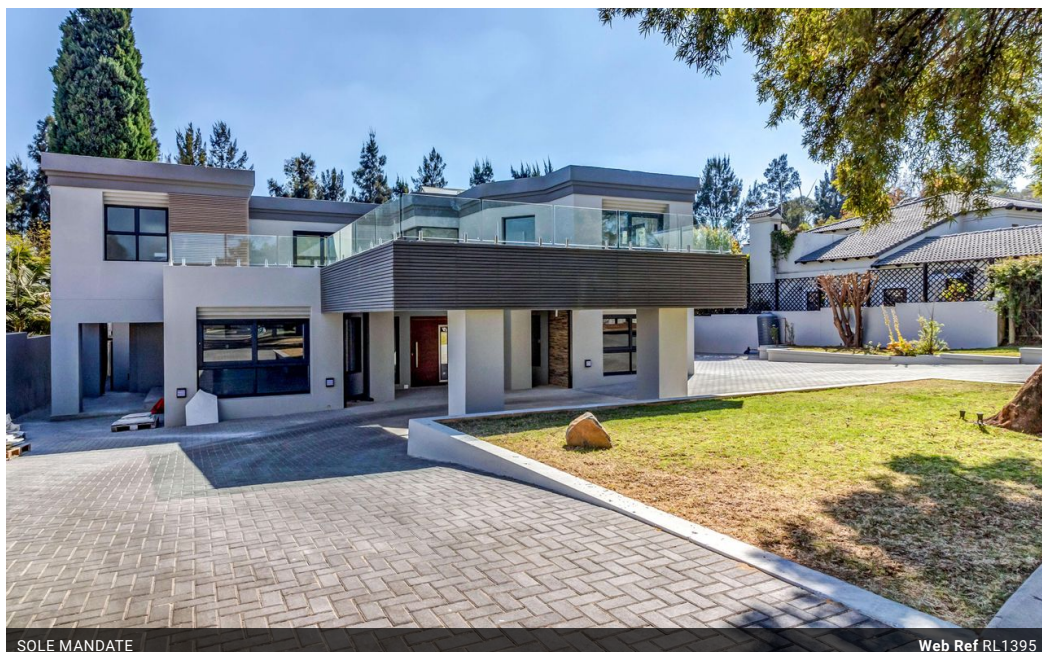


Elisha Botterill
0845558155
elisha@malherbex.com

Contact Head Office

011 7869364

Unit 1 Cyrus House (Building 13) Mulberry Hill Office Park, Dainfern, Sandton, 2191



SOLE MANDATE

Web Ref RL1395



R85,000 pm

Monthly Levy R4,490 Lease Period 12 months Availability Immediately
Deposit - Annual Escalation -

 5  5.5  2

Exquisite in Design, Space and Grandeur!

Presenting an exquisite contemporary haven within the prestigious enclave of Dainfern Golf Estate. This newly renovated masterpiece awaits, inviting you to experience luxury living at its finest. Poised with a captivating North-facing aspect overlooking a lush greenbelt, this modern marvel redefines gracious living.

Step into a realm where open-plan opulence merges seamlessly with premium aesthetics. Immerse yourself in a symphony of fine design, where marble surfaces grace both the countertops and floors, elevating every moment to an experience of elegance.

As you enter, a vast entertainment expanse unfolds, bathed in natural light that pours through expansive aluminum sliding doors and windows. The ambiance is a marriage of modernity and comfort, bathed in a palette of contemporary hues that evoke serenity throughout....

Features

Pets Allowed	Yes		
Interior		Exterior	Sizes
Bedrooms	5	Garages	2
Bathrooms	5.5	Security	Yes
Recep. Rooms	3	Dom. Accom.	1
Studies	1	Pool	Yes
Furnished	No		Land Size 1,002m ²

