



**MALHERBEX™**  
PROPERTY GROUP



**Elisha Botterill**  
0845558155  
elisha@malherbex.com

Contact Head Office

011 7869364

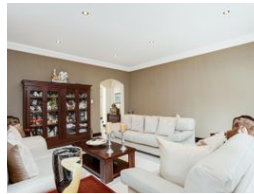
Unit 1 Cyrus House (Building 13) Mulberry Hill Office Park, Dainfern, Sandton, 2191

## 5 Bedroom House To Let in Dainfern Golf Estate



SOLE MANDATE

Web Ref RL1445



R75,000 pm

Monthly Levy R4,490

Lease Period 12 months

Availability 01 Jun 2025

Deposit - Annual Escalation -

5 4.5 3

### Magnificent 5 Bedroom Family Home!

Sole and exclusive mandate!

This modern masterpiece is impeccably designed to offer you the ultimate living experience, from the grand double-volume entrance hall that sets the tone for the rest of the house to the four reception rooms that cater to all your entertaining needs.

Boasting a formal lounge, family living room, formal dining room, and entertainers room with a gas fireplace, this home is perfect for those who love to entertain. The aluminum stacking doors on the patio overlooking the private swimming pool create an ideal ambiance for outdoor gatherings.

The large modern kitchen is a chef's dream, equipped with the finest features and finishes, a large center island with a gas hob and two ovens, making it an ideal space to whip up delicious meals and entertain your guests.

Upstairs features four spacious...

### Features

**Pets Allowed** Yes

#### Interior

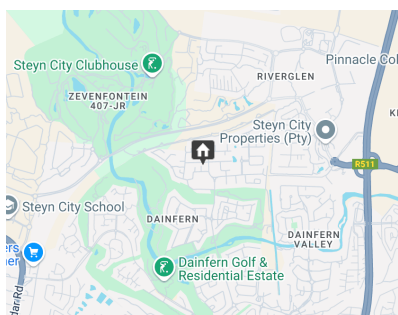
Bedrooms 5  
Bathrooms 4.5  
Kitchens 1  
Recep. Rooms 4  
Studies 1  
Furnished No

#### Exterior

Garages 3  
Security Yes  
Dom. Accom. 1  
Pool Yes

#### Sizes

Floor Size 613m<sup>2</sup>  
Land Size 992m<sup>2</sup>



<https://www.malherbex.com>