



**MALHERBEX™**  
PROPERTY GROUP



**Elisha Botterill**  
0845558155  
elisha@malherbex.com

Contact Head Office

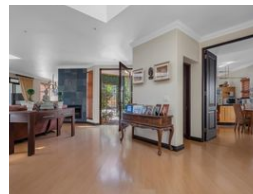
011 7869364

Unit 1 Cyrus House (Building 13) Mulberry Hill Office Park, Dainfern, Sandton, 2191

## 4 Bedroom Freehold To Let in Dainfern Ridge Estate



Web Ref RL1427



R40,000 pm

**Monthly Levy** R3,390 **Lease Period** 12 months **Availability** Immediately  
**Deposit** - **Annual Escalation** -

4 3.5 2

### Tranquil 4 Bedroom Family Home In Secure Estate

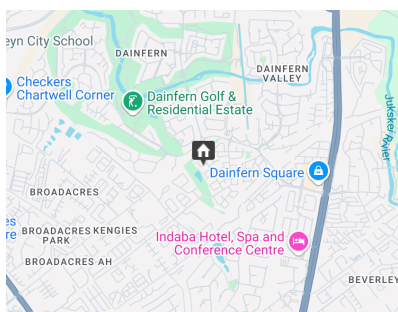
Nestled in the prestigious Dainfern Ridge Estate, just a stone's throw from Dainfern College, lies this north-facing gem bathed in natural light.

This exquisite four bedroom home promises luxurious living with every modern convenience you could desire. The stunning Main bedroom with en-suite bathroom invites you to start the day with a touch of elegance, while the walk-in dressing room, with its cupboards reaching the ceiling, offers ample storage space. Sliding glass doors lead you to the garden, where the morning sun greets you. With four skylights, underfloor heating, and two air conditioners in the home, comfort is assured no matter the season.

The home's eco-friendly features are a marvel. Nine solar panels power a 10kW Vitron inverter, supported by two batteries, ensuring your energy needs are met sustainably. The...

### Features

<b>Pets Allowed</b>	Yes		
<b>Interior</b>		<b>Exterior</b>	<b>Sizes</b>
Bedrooms	4	Garages	2
Bathrooms	3.5	Dom. Accom.	1
Recep. Rooms	3	Pool	Yes
Studies	1		
Furnished	No		
			Land Size 860m <sup>2</sup>



<https://www.malherbex.com>