



MALHERBEX™
PROPERTY GROUP



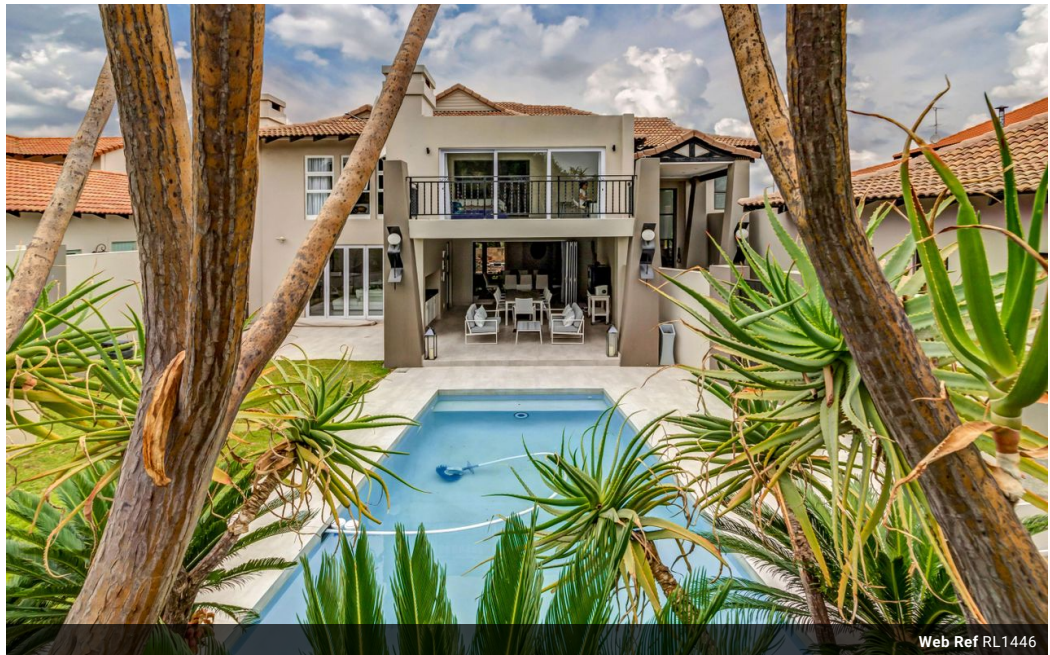
Elisha Botterill
0845558155
elisha@malherbex.com

Contact Head Office

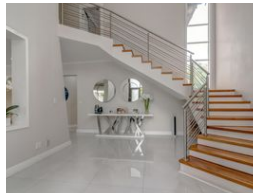
011 7869364

Unit 1 Cyrus House (Building 13) Mulberry Hill Office Park, Dainfern, Sandton, 2191

5 Bedroom Freehold To Let in Dainfern Valley Estate



Web Ref RL1446



R55,000 pm

Monthly Levy R4,510

Lease Period 12 months

Availability 01 May 2025

Deposit - Annual Escalation -

5 4.5 3

Beautifully Renovated 5 Bedroom Home!

This breathtaking 5-bedroom family home has been flawlessly renovated and meticulously cared for, with sleek, modern finishes throughout.

The expansive open-plan layout creates a perfect balance of style and functionality, providing ample space for rest, recreation, work, and storage. The home features a sophisticated gourmet kitchen equipped with a gas stove, and a separate scullery for added convenience. The kitchen seamlessly connects to the dining and lounge areas, which open onto a spacious covered patio and a separate family room.

From the patio, you can enjoy the outdoors while overlooking the swimming pool and tranquil garden-ideal for relaxing or entertaining.

The property boasts five spacious bedrooms, including a versatile guest suite on the ground floor, which can easily be used as a study. Upstairs,...

Features

Pets Allowed Yes

Interior

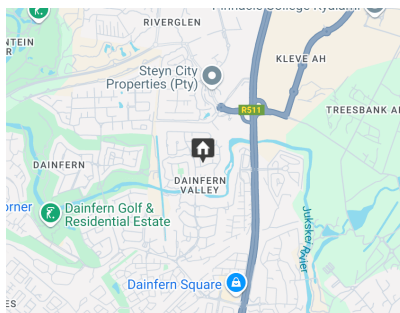
Bedrooms 5
Bathrooms 4.5
Kitchens 1
Recep. Rooms 3
Furnished No

Exterior

Garages 3
Dom. Accom. 1
Pool Yes

Sizes

Land Size 851m²



<https://www.malherbex.com>