



MALHERBEX™
PROPERTY GROUP



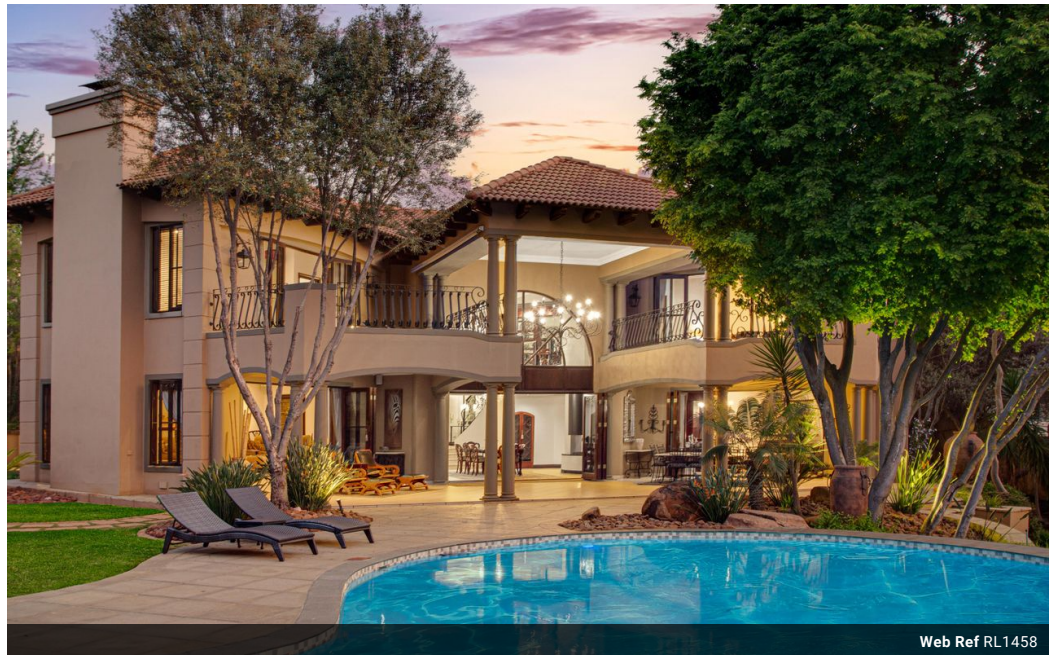
Elisha Botterill
0845558155
elisha@malherbex.com

Contact Head Office

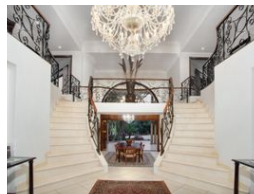
011 7869364

Unit 1 Cyrus House (Building 13) Mulberry
Hill Office Park, Dainfern, Sandton, 2191

6 Bedroom House To Let in Dainfern Valley Estate



Web Ref RL1458



R110,000 pm

Monthly Levy R4,510

Lease Period 12 months

Availability 01 Jun 2025

Deposit - Annual Escalation -

🛏 6 🚿 6.5 🚗 4

Unparalleled Luxury and Elegance Awaits!

We are excited to present one of the Valley's finest properties, a true gem in both its location and what it has to offer. This remarkable home, set across two stands, provides uninterrupted river views and boasts a stunning garden complete with a swimming pool, bocce ball court, and the utmost privacy.

As you step inside, you're greeted by a grand entrance and a double-marble staircase, which set the tone for the entire home. With only the finest finishes throughout, this residence is tailored for those who appreciate exceptional quality and timeless style. Some of the standout features include spacious living areas with a built-in gas fireplace and stacking doors leading to the patio, which overlooks the pool and garden.

The dining area includes a wine cabinet and another fireplace, while the exquisite kitchen is...

Features

Pets Allowed Yes

Interior

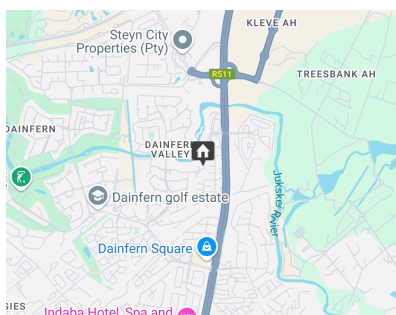
| | |
|--------------|-----|
| Bedrooms | 6 |
| Bathrooms | 6.5 |
| Kitchens | 1 |
| Recep. Rooms | 3 |
| Studies | 1 |
| Furnished | No |

Exterior

| | |
|-------------|-----|
| Garages | 4 |
| Dom. Accom. | 1 |
| Pool | Yes |

Sizes

| | |
|------------|---------------------|
| Floor Size | 719m ² |
| Land Size | 2,245m ² |



<https://www.malherbex.com>