



MALHERBEX™
PROPERTY GROUP



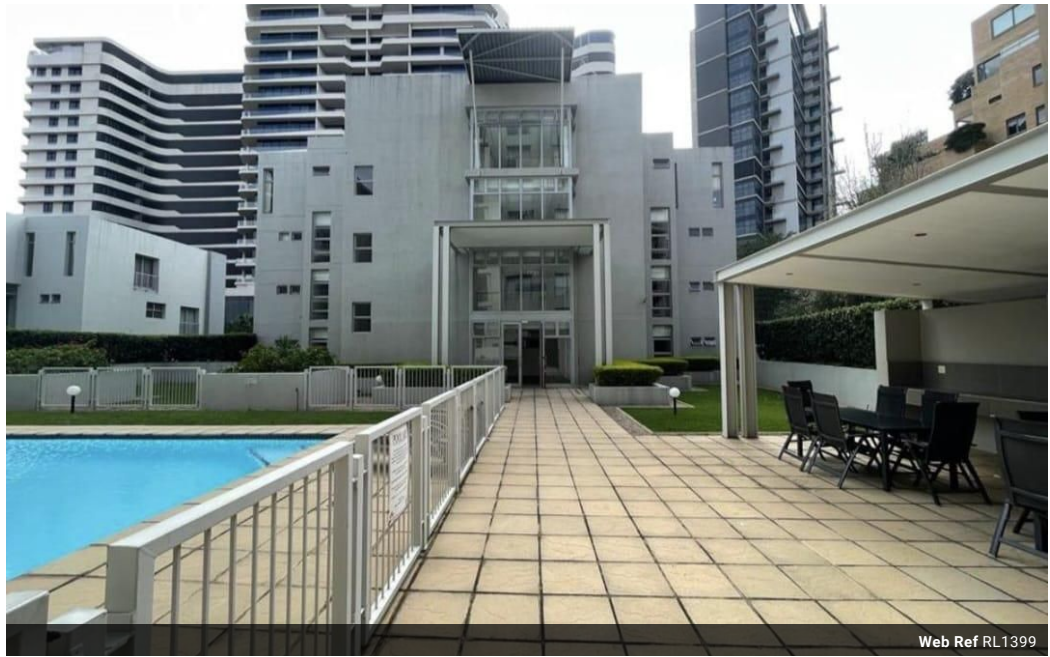
Busi Chizwina
0713847066
busi@malherbex.com

Contact Head Office

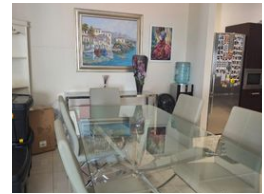
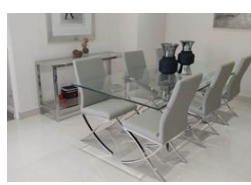
011 7869364

Unit 1 Cyrus House (Building 13) Mulberry Hill Office Park, Dainfern, Sandton, 2191

2 Bedroom Apartment To Let in Morningside



Web Ref RL1399



R17,000 pm

Lease Period 12 months
Annual Escalation -

Availability 01 May 2025

Deposit -

2 2

Elegant Furnished Apartment

Located in the highly sought-after Morningside area of Sandton, this beautifully furnished apartment offers a perfect blend of elegance and comfort. With a stylish design and top-notch security, it ensures both peace of mind and convenience.

The apartment features two spacious bedrooms, two exquisite bathrooms (one en-suite), and an open-plan lounge with a modern, generously sized kitchen. The kitchen provides plenty of storage, space for two under-counter appliances, and a double-door fridge. A balcony seamlessly connects the lounge to the main bedroom, offering a pleasant outdoor space. The lounge is large enough to accommodate a dining suite for added versatility.

Please note that the furniture shown may differ from the actual offering, and the owner is open to considering requests for additional items. in addition the...

Features

Interior

Bedrooms	2
Bathrooms	2
Kitchens	1
Recep. Rooms	2

Exterior

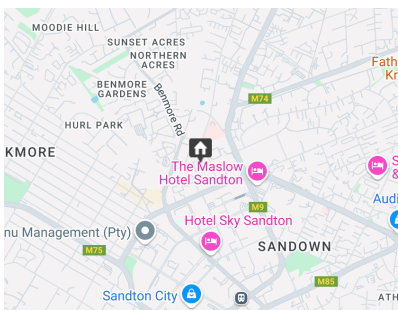
Carports / Parkings	2
Pool	Yes

Sizes

Floor Size	115m ²
Land Size	115m ²

Extras

Balcony Built-in Wardrobes Guard Guard House Open Plan



<https://www.malherbex.com>