



MALHERBEX™
PROPERTY GROUP



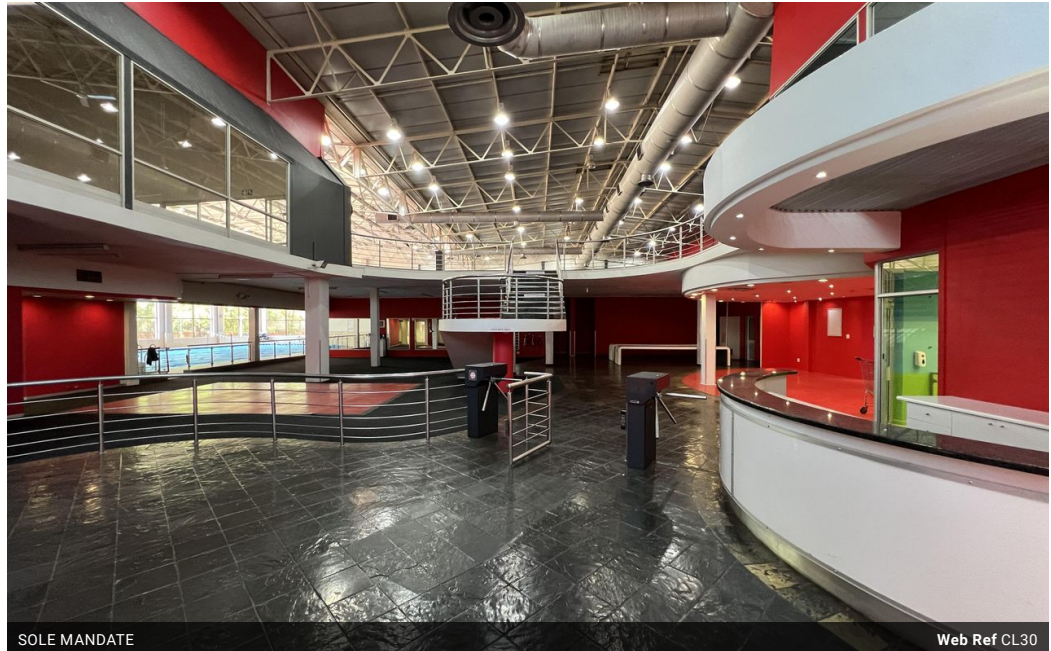
Willie Malherbe
0834257174
willie@malherbex.com

Contact Head Office

011 7869364

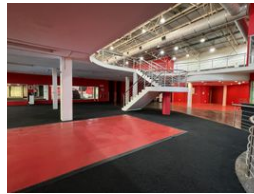
Unit 1 Cyrus House (Building 13) Mulberry Hill Office Park, Dainfern, Sandton, 2191

3,162m² Business For Sale in Denlee



SOLE MANDATE

Web Ref CL30



R25,000,000

0 60

World class gym or Church/Retail

The property is constructed of modern design and materials and has been well maintained over the years. The property is also able to cater for physically challenged persons. The double storey building with a large number of parking bay's available within the grounds. The building is mostly double volume in height with an access to the first floor by means of a stairway. The ground floor comprises of a reception foyer, two presentation administrative offices, a gym area, large swimming pool, toilet facilities as well as disabled toilets, change rooms with lockers and showers, steam room and child-minding facilities are located at the back of the property, two plant rooms housing the air-conditioning, pool machinery and workshop.

Features

Title	Freehold				
Zoning	Retail				
Interior		Exterior		Sizes	
Air Conditioning	Yes	Security	Yes	Floor Size	3,162m ²
Power 3 Phase	Yes	Open Parking Bays	60	Land Size	8,000m ²



<https://www.malherbex.com>